



NATIONAL POWER CORPORATION

MinGen

PHILIPPINE BIDDING DOCUMENTS

(Procurement of INFRASTRUCTURE PROJECTS)

FOR

CONSTRUCTION OF WHARF WITH
INTEGRATED 702 MASL ELEVATION
MARKER AT BRGY. LUMBAC
MADALUM, LANA O DEL SUR

P.R. No.: MG-COM22-011

Contracts Management Office
Logistics Division

Sixth Edition
July 2020
Rev. 2

TABLE OF CONTENTS

GLOSSARY OF.....	4
TERMS, ABBREVIATIONS, AND ACRONYMS	4
SECTION I. INVITATION TO BID.....	7
SECTION II. INSTRUCTIONS TO BIDDERS.....	11
1. Scope of Bid.....	12
2. Funding Information.....	12
3. Bidding Requirements	12
4. Corrupt, Fraudulent, Collusive, Coercive, and Obstructive Practices.....	13
5. Eligible Bidders	13
6. Origin of Associated Goods.....	13
7. Subcontracts.....	13
8. Pre-Bid Conference.....	14
9. Clarification and Amendment of Bidding Documents	14
10. Documents Comprising the Bid: Eligibility and Technical Components.....	14
11. Documents Comprising the Bid: Financial Component.....	15
12. Alternative Bids	15
13. Bid Prices.....	15
14. Bid and Payment Currencies.....	15
15. Bid Security	15
16. Sealing and Marking of Bids	16
17. Deadline for Submission of Bids.....	16
18. Opening and Preliminary Examination of Bids.....	16
19. Detailed Evaluation and Comparison of Bids.....	16
20. Post Qualification	17
21. Signing of the Contract.....	17
SECTION III. BID DATA SHEET.....	18
SECTION IV. GENERAL CONDITIONS OF CONTRACT.....	22
1. Scope of Contract.....	23
2. Sectional Completion of Works.....	23
3. Possession of Site.....	23
4. The Contractor's Obligations.....	23
5. Performance Security.....	24

6. Site Investigation Reports.....	24
7. Warranty	24
8. Liability of the Contractor	24
9. Termination for Other Causes.....	25
10. Dayworks	25
11. Program of Work.....	25
12. Instructions, Inspections and Audits.....	25
13. Advance Payment	25
14. Progress Payments	26
15. Operating and Maintenance Manuals	26
SECTION V. SPECIAL CONDITIONS OF CONTRACT	27
SECTION VI. SPECIFICATIONS.....	29
SECTION VII. DRAWINGS	49
SECTION VIII. BILL OF QUANTITIES.....	64
SECTION IX. CHECKLIST OF TECHNICAL AND FINANCIAL DOCUMENTS	66
FORM OF BID SECURITY (SURETY BOND)	73
CONTRACTOR'S ORGANIZATIONAL CHART FOR THE CONTRACT	76
JOINT VENTURE AGREEMENT.....	90
BID FORM	92
SUMMARY SHEETS OF MATERIALS PRICES, LABOR RATES AND EQUIPMENT RENTAL RATES	95

Glossary of Terms, Abbreviations, and Acronyms

ABC – Approved Budget for the Contract.

ARCC – Allowable Range of Contract Cost.

BAC – Bids and Awards Committee.

Bid – A signed offer or proposal to undertake a contract submitted by a bidder in response to and in consonance with the requirements of the bidding documents. Also referred to as *Proposal and Tender*. (2016 revised IRR, Section 5[c])

Bidder – Refers to a contractor, manufacturer, supplier, distributor and/or consultant who submits a bid in response to the requirements of the Bidding Documents. (2016 revised IRR, Section 5[d])

Bidding Documents – The documents issued by the Procuring Entity as the bases for bids, furnishing all information necessary for a prospective bidder to prepare a bid for the Goods, Infrastructure Projects, and/or Consulting Services required by the Procuring Entity. (2016 revised IRR, Section 5[e])

BIR – Bureau of Internal Revenue.

BSP – Bangko Sentral ng Pilipinas.

CDA – Cooperative Development Authority.

Consulting Services – Refer to services for Infrastructure Projects and other types of projects or activities of the GOP requiring adequate external technical and professional expertise that are beyond the capability and/or capacity of the GOP to undertake such as, but not limited to: (i) advisory and review services; (ii) pre-investment or feasibility studies; (iii) design; (iv) construction supervision; (v) management and related services; and (vi) other technical services or special studies. (2016 revised IRR, Section 5[i])

Contract – Refers to the agreement entered into between the Procuring Entity and the Supplier or Manufacturer or Distributor or Service Provider for procurement of Goods and Services; Contractor for Procurement of Infrastructure Projects; or Consultant or Consulting Firm for Procurement of Consulting Services; as the case may be, as recorded in the Contract Form signed by the parties, including all attachments and appendices thereto and all documents incorporated by reference therein.

Contractor – is a natural or juridical entity whose proposal was accepted by the Procuring Entity and to whom the Contract to execute the Work was awarded. Contractor as used in these Bidding Documents may likewise refer to a supplier, distributor, manufacturer, or consultant.

CPI – Consumer Price Index.

DOLE – Department of Labor and Employment.

DTI – Department of Trade and Industry.

Foreign-funded Procurement or Foreign-Assisted Project –Refers to procurement whose funding source is from a foreign government, foreign or international financing institution as specified in the Treaty or International or Executive Agreement. (2016 revised IRR, Section 5[b]).

GFI – Government Financial Institution.

GOCC –Government-owned and/or –controlled corporation.

Goods – Refer to all items, supplies, materials and general support services, except Consulting Services and Infrastructure Projects, which may be needed in the transaction of public businesses or in the pursuit of any government undertaking, project or activity, whether in the nature of equipment, furniture, stationery, materials for construction, or personal property of any kind, including non-personal or contractual services such as the repair and maintenance of equipment and furniture, as well as trucking, hauling, janitorial, security, and related or analogous services, as well as procurement of materials and supplies provided by the Procuring Entity for such services. The term “related” or “analogous services” shall include, but is not limited to, lease or purchase of office space, media advertisements, health maintenance services, and other services essential to the operation of the Procuring Entity. (2016 revised IRR, Section 5[r])

GOP – Government of the Philippines.

Infrastructure Projects – Include the construction, improvement, rehabilitation, demolition, repair, restoration or maintenance of roads and bridges, railways, airports, seaports, communication facilities, civil works components of information technology projects, irrigation, flood control and drainage, water supply, sanitation, sewerage and solid waste management systems, shore protection, energy/power and electrification facilities, national buildings, school buildings, hospital buildings, and other related construction projects of the government. Also referred to as *civil works or works*. (2016 revised IRR, Section 5[u])

LGUs – Local Government Units.

NFCC – Net Financial Contracting Capacity.

NGA – National Government Agency.

PCAB – Philippine Contractors Accreditation Board.

PhilGEPS - Philippine Government Electronic Procurement System.

Procurement Project – refers to a specific or identified procurement covering goods, infrastructure project or consulting services. A Procurement Project shall be described, detailed, and scheduled in the Project Procurement Management Plan prepared by the agency which shall be consolidated in the procuring entity's Annual Procurement Plan. (GPPB Circular No. 06-2019 dated 17 July 2019)

PSA – Philippine Statistics Authority.

SEC – Securities and Exchange Commission.

SLCC – Single Largest Completed Contract.

UN – United Nations.

BID DOCUMENTS

NAME OF PROJECT : Construction Of Wharf With Integrated 702 Masl
Elevation Marker At Brgy. Lumbac, Madalum,
Lanao Del Sur

SECTION I- INVITATION TO BID

PR NO./REF. NO : MG-COM22-011/INFRA2022-CDD-029

Section I. Invitation to Bid



NATIONAL POWER CORPORATION

MinGen

***Invitation to Bid for Construction of Wharf with Integrated
702 Masl Elevation Marker at Brgy. Lumbac, Madalum,
Lanao Del Sur***

1. The *NATIONAL POWER CORPORATION-MINDANAO GENERATION*, through the approved Corporate Budget of NPC for CY 2022 intends to apply the sum of *Two Million Nine Hundred Ninety Nine Thousand Five Hundred Forty & 28/100 Pesos (PHP2,999,540.28)* being the Approved Budget for the Contract (ABC) to payments under the contract for *Construction of Wharf with Integrated 702 Masl Elevation Marker at Brgy. Lumbac, Madalum, Lanao Del Sur (INFRA2022-CDD-029)*. Bids received in excess of the ABC shall be automatically rejected at bid opening.
2. The *NATIONAL POWER CORPORATION-MINDANAO GENERATION* now invites bids for the above Procurement Project. Completion of the Works is required *Ninety (90) calendar days*. Bidders should have completed a contract similar to the Project. The description of an eligible bidder is contained in the Bidding Documents, particularly, in Section II (Instructions to Bidders).
3. Bidding will be conducted through open competitive bidding procedures using non-discretionary "*pass/fail*" criterion as specified in the 2016 revised Implementing Rules and Regulations (IRR) of Republic Act (RA) No. 9184.
4. Interested bidders may obtain further information from *BAC Secretariat, NATIONAL POWER CORPORATION-MINDANAO GENERATION* and inspect the Bidding Documents at the address given below from *8:00 AM – 5:00 PM Monday to Friday*.
5. A complete set of Bidding Documents may be acquired by interested Bidders on *June 20 – July 12, 2022* from the given address and website(s) below and upon payment of the applicable fee for the Bidding Documents, pursuant to the latest Guidelines issued by the GPPB, in the amount of *Three Thousand Pesos (PHP 3,000.00)*. The Procuring Entity shall allow the bidder to pay online and present its proof of payment for the fees *in person, by facsimile, or through electronic means*. *For those prospective bidders who wish to pay online, below are the details of the account:*

LandbankAccount name : NPC GENCO 5 COLLECTIONS FUND
LandbankAccount number : 032I-1689-14

It may also be downloaded free of charge from the website of the Philippine Government Electronic Procurement System (PhilGEPS) provided that Bidders shall pay the applicable fee for the Bidding Documents not later than the submission of their bids.


6. The *NATIONAL POWER CORPORATION-MINDANAO GENERATION* will hold a Pre-Bid Conference on *June 30, 2022 at 9:00 AM* at *Bidding Room, NPC-Mindanao Generation Headquarters, Maria Cristina, Iligan City* and/or through videoconferencing/webcasting via *ZOOM*, which shall be open to prospective bidders. Interested online attendees are required to pre-register one (1) day before the scheduled pre-bidding conference. For pre-registration, contact tel. no. (063)-222-3459 or email logistics_afd_mingen@napocor.gov.ph.
7. Bids must be duly received by the BAC Secretariat through manual submission at the office address as indicated below, on or before *July 12, 2022 at 9:30 AM*. Late bids shall not be accepted.
8. All bids must be accompanied by a bid security in any of the acceptable forms and in the amount stated in ITB Clause 15.
9. Bid opening shall be on *July 12, 2022 at 9:30 AM* at the *Bidding Room, NPC-Mindanao Generation Headquarters, Maria Cristina, Iligan City*. Bids will be opened in the presence of the bidders' representatives who choose to attend the activity.
10. *This project requires submission of at least:*
 - *Certificate of Site Inspection*
11. The *NATIONAL POWER CORPORATION- MINDANAO GENERATION* reserves the right to reject any and all bids, declare a failure of bidding, or not award the contract at any time prior to contract award in accordance with Sections 35.6 and 41 of the 2016 revised Implementing Rules and Regulations (IRR) of RA No. 9184, without thereby incurring any liability to the affected bidder or bidders.
12. For further information, please refer to:

*BAC Secretariat
Contracts Management Office
Logistics Division
Mindanao Generation Headquarters
National Power Corporation
Maria Cristina, Iligan City
logistics_afd_mingen@napocor.gov.ph
Tel. No.: (063)222-3459
Fax No.: (063)223-8355/(063)223-4604*

www.napocor.gov.ph

13. You may visit the following websites:

For downloading of Bidding Documents: <https://www.philgeps.gov.ph/> or
<https://www.napocor.gov.ph/BCSD/bids.php>



REYNANTE T. CIRUELA
Chairman, Bids and Awards Committee
Mindanao Generation Headquarters

Date of PhilGEPS Publication: 20 June 2022

Section II. Instructions to Bidders

1. Scope of Bid

The Procuring Entity, **NATIONAL POWER CORPORATION-MINDANAO GENERATION** invites Bids for the *Construction of Wharf with Integrated 702 Mast Elevation Marker at Brgy. Lumbac, Madalum, Lanao Del Sur, with Project Identification Number INFRA2022-CDD-029.*

The Procurement Project (referred to herein as "Project") is for the construction of Works, as described in Section VI (Specifications).

2. Funding Information

- 2.1. The GOP through the source of funding as indicated below for CY 2022 in the amount of *Three Million Pesos (PHP3,000,000.00)*
- 2.2. The source of funding is:
 - a. GOCC and GFIs, the proposed Corporate Operating Budget.

3. Bidding Requirements

The Bidding for the Project shall be governed by all the provisions of RA No. 9184 and its 2016 revised IRR, including its Generic Procurement Manual and associated policies, rules and regulations as the primary source thereof, while the herein clauses shall serve as the secondary source thereof.

Any amendments made to the IRR and other GPPB issuances shall be applicable only to the ongoing posting, advertisement, or invitation to bid by the BAC through the issuance of a supplemental or bid bulletin.

The Bidder, by the act of submitting its Bid, shall be deemed to have inspected the site, determined the general characteristics of the contracted Works and the conditions for this Project, such as the location and the nature of the work; (b) climatic conditions; (c) transportation facilities; (c) nature and condition of the terrain, geological conditions at the site communication facilities, requirements, location and availability of construction aggregates and other materials, labor, water, electric power and access roads; and (d) other factors that may affect the cost, duration and execution or implementation of the contract, project, or work and examine all instructions, forms, terms, and project requirements in the Bidding Documents.

4. Corrupt, Fraudulent, Collusive, Coercive, and Obstructive Practices

The Procuring Entity, as well as the Bidders and Contractors, shall observe the highest standard of ethics during the procurement and execution of the contract. They or through an agent shall not engage in corrupt, fraudulent, collusive, coercive, and obstructive practices defined under Annex "I" of the 2016 revised IRR of RA No. 9184 or other integrity violations in competing for the Project.

5. Eligible Bidders

- 5.1. Only Bids of Bidders found to be legally, technically, and financially capable will be evaluated.
- 5.2. The Bidder must have an experience of having completed a Single Largest Completed Contract (SLCC) that is similar to this Project, equivalent to at least fifty percent (50%) of the ABC adjusted, if necessary, by the Bidder to current prices using the PSA's CPI, except under conditions provided for in Section 23.4.2.4 of the 2016 revised IRR of RA No. 9184.

A contract is considered to be "similar" to the contract to be bid if it has the major categories of work stated in the BDS.

- 5.3. For Foreign-funded Procurement, the Procuring Entity and the foreign government/foreign or international financing institution may agree on another track record requirement, as specified in the Bidding Document prepared for this purpose.
- 5.4. The Bidders shall comply with the eligibility criteria under Section 23.4.2 of the 2016 IRR of RA No. 9184.

6. Origin of Associated Goods

There is no restriction on the origin of Goods other than those prohibited by a decision of the UN Security Council taken under Chapter VII of the Charter of the UN.

7. Subcontracts

- 7.1. The Bidder may subcontract portions of the Project to the extent allowed by the Procuring Entity as stated herein, but in no case more than fifty percent (50%) of the Project.

The Procuring Entity has prescribed that:

- a. Subcontracting is not allowed.

8. Pre-Bid Conference

The Procuring Entity will hold a pre-bid conference for this Project on the specified date and time and either at its physical address and/or through videoconferencing/webcasting as indicated in paragraph 6 of the IB.

9. Clarification and Amendment of Bidding Documents

Prospective bidders may request for clarification on and/or interpretation of any part of the Bidding Documents. Such requests must be in writing and received by the Procuring Entity, either at its given address or through electronic mail indicated in the IB, at least ten (10) calendar days before the deadline set for the submission and receipt of Bids.

10. Documents Comprising the Bid: Eligibility and Technical Components

- 10.1. The first envelope shall contain the eligibility and technical documents of the Bid as specified in Section IX. Checklist of Technical and Financial Documents.
- 10.2. If the eligibility requirements or statements, the bids, and all other documents for submission to the BAC are in foreign language other than English, it must be accompanied by a translation in English, which shall be authenticated by the appropriate Philippine foreign service establishment, post, or the equivalent office having jurisdiction over the foreign bidder's affairs in the Philippines. For Contracting Parties to the Apostille Convention, only the translated documents shall be authenticated through an apostille pursuant to GPPB Resolution No. 13-2019 dated 23 May 2019. The English translation shall govern, for purposes of interpretation of the bid.
- 10.3. A valid PCAB License is required, and in case of joint ventures, a valid special PCAB License, and registration for the type and cost of the contract for this Project. Any additional type of Contractor license or permit shall be indicated in the BDS.
- 10.4. A List of Contractor's key personnel (e.g., Project Manager, Project Engineers, Materials Engineers, and Foremen) assigned to the contract to be bid, with their complete qualification and experience data shall be provided. These key personnel must meet the required minimum years of experience set in the BDS.
- 10.5. A List of Contractor's major equipment units, which are owned, leased, and/or under purchase agreements, supported by proof of ownership, certification of availability of equipment from the equipment lessor/vendor for the duration of

the project, as the case may be, must meet the minimum requirements for the contract set in the BDS.

11. Documents Comprising the Bid: Financial Component

- 11.1. The second bid envelope shall contain the financial documents for the Bid as specified in **Section IX. Checklist of Technical and Financial Documents**.
- 11.2. Any bid exceeding the ABC indicated in paragraph I of the **IB** shall not be accepted.
- 11.3. For Foreign-funded procurement, a ceiling may be applied to bid prices provided the conditions are met under Section 31.2 of the 2016 revised IRR of RA No. 9184.

12. Alternative Bids

Bidders shall submit offers that comply with the requirements of the Bidding Documents, including the basic technical design as indicated in the drawings and specifications. Unless there is a value engineering clause in the **BDS**, alternative Bids shall not be accepted.

13. Bid Prices

All bid prices for the given scope of work in the Project as awarded shall be considered as fixed prices, and therefore not subject to price escalation during contract implementation, except under extraordinary circumstances as determined by the NEDA and approved by the GPPB pursuant to the revised Guidelines for Contract Price Escalation guidelines.

14. Bid and Payment Currencies

- 14.1. Bid prices may be quoted in the local currency or tradeable currency accepted by the BSP at the discretion of the Bidder. However, for purposes of bid evaluation, Bids denominated in foreign currencies shall be converted to Philippine currency based on the exchange rate as published in the BSP reference rate bulletin on the day of the bid opening.
- 14.2. *Payment of the contract price shall be made in:*
 - a. Philippine Pesos.

15. Bid Security

- 15.1. The Bidder shall submit a Bid Securing Declaration or any form of Bid Security in the amount indicated in the **BDS**, which shall be not less than the percentage of the ABC in accordance with the schedule in the **BDS**.

- 15.2. The Bid and bid security shall be valid until *One Hundred Twenty (120) Calendar Days from the Scheduled Bid Opening*. Any bid not accompanied by an acceptable bid security shall be rejected by the Procuring Entity as non-responsive.

16. Sealing and Marking of Bids

Each Bidder shall submit one copy of the first and second components of its Bid.

The Procuring Entity may request additional hard copies and/or electronic copies of the Bid. However, failure of the Bidders to comply with the said request shall not be a ground for disqualification.

If the Procuring Entity allows the submission of bids through online submission to the given website or any other electronic means, the Bidder shall submit an electronic copy of its Bid, which must be digitally signed. An electronic copy that cannot be opened or is corrupted shall be considered non-responsive and, thus, automatically disqualified.

17. Deadline for Submission of Bids

The Bidders shall submit on the specified date and time and either at its physical address or through online submission as indicated in paragraph 7 of the IB.

18. Opening and Preliminary Examination of Bids

- 18.1. The BAC shall open the Bids in public at the time, on the date, and at the place specified in paragraph 9 of the IB. The Bidders' representatives who are present shall sign a register evidencing their attendance. In case videoconferencing, webcasting or other similar technologies will be used, attendance of participants shall likewise be recorded by the BAC Secretariat.

In case the Bids cannot be opened as scheduled due to justifiable reasons, the rescheduling requirements under Section 29 of the 2016 revised IRR of RA No. 9184 shall prevail.

- 18.2. The preliminary examination of Bids shall be governed by Section 30 of the 2016 revised IRR of RA No. 9184.

19. Detailed Evaluation and Comparison of Bids

- 19.1. The Procuring Entity's BAC shall immediately conduct a detailed evaluation of all Bids rated "*passed*" using non-discretionary pass/fail criteria. The BAC shall consider the conditions in the evaluation of Bids under Section 32.2 of 2016 revised IRR of RA No. 9184.

- 19.2. If the Project allows partial bids, all Bids and combinations of Bids as indicated in the **BDS** shall be received by the same deadline and opened and evaluated simultaneously so as to determine the Bid or combination of Bids offering the lowest calculated cost to the Procuring Entity. Bid Security as required by **ITB** Clause 16 shall be submitted for each contract (lot) separately.
- 19.3. In all cases, the NFCC computation pursuant to Section 23.4.2.6 of the 2016 revised IRR of RA No. 9184 must be sufficient for the total of the ABCs for all the lots participated in by the prospective Bidder.

20. Post Qualification

Within a non-extendible period of five (5) calendar days from receipt by the Bidder of the notice from the BAC that it submitted the Lowest Calculated Bid, the Bidder shall submit its latest income and business tax returns filed and paid through the BIR Electronic Filing and Payment System (eFPS), and other appropriate licenses and permits required by law and stated in the **BDS**.

21. Signing of the Contract

The documents required in Section 37.2 of the 2016 revised IRR of RA No. 9184 shall form part of the Contract. Additional Contract documents are indicated in the **BDS**.

Section III. Bid Data Sheet

Bid Data Sheet

ITB Clause			
5.2	For this purpose, contracts similar to the Project refer to contracts which have the same major categories of work, which shall be: <u>Construction of Wharf or Dams or River Embankment</u>		
7.1	Subcontracting is not allowed.		
10.3	None		
10.4	The key personnel must meet the required minimum years of experience set below:		
	<u>Key Personnel</u>	<u>General Expertise</u>	<u>Relevant Experience</u>
	1 - Project Engineer	Licensed Civil Engineer	At least five (5) years experience in related works
	1 - Construction Foreman	B.S. Civil Engineering Graduate	At least three (3) years experience in similar works
		Civil Engineering Technology Graduate	At least five (5) years experience in similar works
		Non-graduate	At least five (5) years working experience as Construction Foreman in similar works
	1 - Construction Safety and Health Officer (SO2)	Construction Safety Officer 2	At least forty (40) hours of Construction Safety and Health (COSH) Training from Occupational Safety and Health Center (OSHC) or Safety Training Organizations (STOs) accredited by the Department of Labor and Employment (DOLE). Must be present during the whole duration of the project)
	1 - Welder		At least three (3) years experience in welding/cutting works

	<p>(1) Valid Professional Regulation Commission (PRC) license for professional personnel; (2) Certificate of Training with accreditation from DOLE for the Construction Safety & Health Officer; (3) TESDA Training Certificate (NC II) of Welders or Electrician; and (4) Diploma and/or Service Record/Certificate of Employment of previous and/or current employer for Construction Foreman & Welders <i>shall be submitted and included as an attachment in the Standard Form NPCMGNSF-INFR-05: List of Key personnel Proposed to be Assigned to the Contract.</i></p> <p>Project Engineer or Foreman and Construction Safety & Health Officer maybe one person, as long as he meets the requirements of the two positions. Provided however, that there is no overlapping of projects undertaken by the same contractor and supervised by the same person.</p> <p>The above key personnel must be either employed by the applicant or contracted by the applicant to be employed for the contract to be bid.</p>															
10.5	<p>The minimum major equipment requirements are the following:</p> <table><tr><td><u>Equipment</u></td><td><u>Capacity</u></td><td><u>Number of Units</u></td></tr><tr><td>Plate Compactor</td><td>5 HP or 2 tons</td><td>One (1)</td></tr><tr><td>Concrete Mixer</td><td>1-Bagger</td><td>One (1)</td></tr><tr><td>Concrete Vibrator, Pen Type</td><td>2 HP</td><td>One (1)</td></tr><tr><td>Welding Machine</td><td>300 Amp.</td><td>One (1)</td></tr></table>	<u>Equipment</u>	<u>Capacity</u>	<u>Number of Units</u>	Plate Compactor	5 HP or 2 tons	One (1)	Concrete Mixer	1-Bagger	One (1)	Concrete Vibrator, Pen Type	2 HP	One (1)	Welding Machine	300 Amp.	One (1)
<u>Equipment</u>	<u>Capacity</u>	<u>Number of Units</u>														
Plate Compactor	5 HP or 2 tons	One (1)														
Concrete Mixer	1-Bagger	One (1)														
Concrete Vibrator, Pen Type	2 HP	One (1)														
Welding Machine	300 Amp.	One (1)														
12	N/A															
15.1	<p>The bid security shall be in the form of a Bid Securing Declaration or any of the following forms and amounts:</p> <p>a. The amount of not less than PHP59,990.81(2% of ABC), if bid security is in cash, cashier's/manager's check, bank draft/guarantee or irrevocable letter of credit;</p> <p>b. The amount of not less than PHP149,977.01(5% of ABC), if bid security is in Surety Bond.</p>															
19.2	Partial bids are allowed, as follows:															
20	<p>Additional documents to be submitted during Post-Qualification:</p> <p>1. Other appropriate licenses and permits required by law and stated in the Bidding documents.</p> <p>a. <i>Original Bank Statement year ending prior to bid opening;</i></p> <p>b. <i>Valid and updated PhilGEPS Registration (Platinum Membership)(all pages);</i></p> <p>c. <i>Registration Certificate from Securities and Exchange Commission (SEC), Department of Trade and Industry (DTI) for sole</i></p>															

	<p><i>proprietorship, or Cooperative Development Authority (CDA) for cooperatives or its equivalent document;</i></p> <p><i>d. Mayor's or Business permit issued by the city or municipality where the principal place of business of the prospective bidder is located, or the equivalent document for Exclusive Economic Zones or Areas;</i></p> <p><i>e. Valid Tax clearance per E.O. No. 398, s. 2005, as finally reviewed and approved by the Bureau of Internal Revenue (BIR). Quarterly Income Tax Returns filed and paid through the BIR Electronic Filing and Payment System (eFPS);</i></p> <p><i>f. The prospective bidder's audited financial statements, showing, among others, the prospective bidder's total and current assets and liabilities, stamped "received" by the BIR or its duly accredited and authorized institutions, for the preceding calendar year which should not be earlier than two (2) years from the date of bid submission;</i></p> <p><i>g. Philippine Contractors Accreditation Board (PCAB) License;</i></p> <p><i>h. Board of Accountancy (BOA) Certificate;</i></p> <p>2. Contract and/or Notice of Award as supporting documents for NPC MinGen Form No. NPCMGNSF-INFR-01, if applicable;</p> <p>3. (a) Valid Professional Regulation Commission (PRC) license for professional personnel; (b) Certificate of Training with accreditation from DOLE for the Construction Safety & Health Officer; (c) TESDA Training Certificate (NC II) of Welders or Electrician; and (d) Diploma and/or Service Record/Certificate of Employment of previous and/or current employer for Construction Foreman, Welders, Electrician & Plumber - as supporting documents for NPC MinGen Form No. NPCMGNSF-INFR-05, if applicable.</p> <p>4. Certificate of Site Inspection issued by Plant/Department Manager or his authorized representative.</p>
21	<p>Additional contract documents relevant to the Project that may be required by existing laws and/or the Procuring Entity, prior to contract signing, such as:</p> <p>a) Approved construction schedule and S-curve</p> <p>b) Approved manpower schedule</p> <p>c) Construction methods</p> <p>d) Approved equipment utilization schedule</p> <p>e) Construction safety and health program approved by the DOLE</p> <p>f) Approved Project Evaluation Review Technique/Critical Path Method (PERT/CPM)</p>

Section IV. General Conditions of Contract

1. Scope of Contract

This Contract shall include all such items, although not specifically mentioned, that can be reasonably inferred as being required for its completion as if such items were expressly mentioned herein. All the provisions of RA No. 9184 and its 2016 revised IRR, including the Generic Procurement Manual, and associated issuances, constitute the primary source for the terms and conditions of the Contract, and thus, applicable in contract implementation. Herein clauses shall serve as the secondary source for the terms and conditions of the Contract.

This is without prejudice to Sections 74.1 and 74.2 of the 2016 revised IRR of RA No. 9184 allowing the GPPB to amend the IRR, which shall be applied to all procurement activities, the advertisement, posting, or invitation of which were issued after the effectivity of the said amendment.

2. Sectional Completion of Works

If sectional completion is specified in the Special Conditions of Contract (SCC), references in the Conditions of Contract to the Works, the Completion Date, and the Intended Completion Date shall apply to any Section of the Works (other than references to the Completion Date and Intended Completion Date for the whole of the Works).

3. Possession of Site

- 4.1. The Procuring Entity shall give possession of all or parts of the Site to the Contractor based on the schedule of delivery indicated in the SCC, which corresponds to the execution of the Works. If the Contractor suffers delay or incurs cost from failure on the part of the Procuring Entity to give possession in accordance with the terms of this clause, the Procuring Entity's Representative shall give the Contractor a Contract Time Extension and certify such sum as fair to cover the cost incurred, which sum shall be paid by Procuring Entity.
- 4.2. If possession of a portion is not given by the above date, the Procuring Entity will be deemed to have delayed the start of the relevant activities. The resulting adjustments in contract time to address such delay may be addressed through contract extension provided under Annex "E" of the 2016 revised IRR of RA No. 9184.

4. The Contractor's Obligations

The Contractor shall employ the key personnel named in the Schedule of Key Personnel indicating their designation, in accordance with ITB Clause 10.3 and specified in the BDS, to carry out the supervision of the Works.

The Procuring Entity will approve any proposed replacement of key personnel only if their relevant qualifications and abilities are equal to or better than those of the personnel listed in the Schedule.

5. Performance Security

- 5.1. Within ten (10) calendar days from receipt of the Notice of Award from the Procuring Entity but in no case later than the signing of the contract by both parties, the successful Bidder shall furnish the performance security in any of the forms prescribed in Section 39 of the 2016 revised IRR.
- 5.2. The Contractor, by entering into the Contract with the Procuring Entity, acknowledges the right of the Procuring Entity to institute action pursuant to RA No. 3688 against any subcontractor be they an individual, firm, partnership, corporation, or association supplying the Contractor with labor, materials and/or equipment for the performance of this Contract.

6. Site Investigation Reports

The Contractor, in preparing the Bid, shall rely on any Site Investigation Reports referred to in the SCC supplemented by any information obtained by the Contractor.

7. Warranty

- 7.1. In case the Contractor fails to undertake the repair works under Section 62.2.2 of the 2016 revised IRR, the Procuring Entity shall forfeit its performance security, subject its property(ies) to attachment or garnishment proceedings, and perpetually disqualify it from participating in any public bidding. All payables of the GOP in his favor shall be offset to recover the costs.
- 7.2. The warranty against Structural Defects/Failures, except that occasioned-on force majeure, shall cover the period from the date of issuance of the Certificate of Final Acceptance by the Procuring Entity. Specific duration of the warranty is found in the SCC.

8. Liability of the Contractor

Subject to additional provisions, if any, set forth in the SCC, the Contractor's liability under this Contract shall be as provided by the laws of the Republic of the Philippines.

If the Contractor is a joint venture, all partners to the joint venture shall be jointly and severally liable to the Procuring Entity.

9. Termination for Other Causes

Contract termination shall be initiated in case it is determined *prima facie* by the Procuring Entity that the Contractor has engaged, before, or during the implementation of the contract, in unlawful deeds and behaviors relative to contract acquisition and implementation, such as, but not limited to corrupt, fraudulent, collusive, coercive, and obstructive practices as stated in ITB Clause 4.

10. Dayworks

Subject to the guidelines on Variation Order in Annex "E" of the 2016 revised IRR of RA No. 9184, and if applicable as indicated in the SCC, the Dayworks rates in the Contractor's Bid shall be used for small additional amounts of work only when the Procuring Entity's Representative has given written instructions in advance for additional work to be paid for in that way.

11. Program of Work

- 11.1. The Contractor shall submit to the Procuring Entity's Representative for approval the said Program of Work showing the general methods, arrangements, order, and timing for all the activities in the Works. The submissions of the Program of Work are indicated in the SCC.
- 11.2. The Contractor shall submit to the Procuring Entity's Representative for approval an updated Program of Work at intervals no longer than the period stated in the SCC. If the Contractor does not submit an updated Program of Work within this period, the Procuring Entity's Representative may withhold the amount stated in the SCC from the next payment certificate and continue to withhold this amount until the next payment after the date on which the overdue Program of Work has been submitted.

12. Instructions, Inspections and Audits

The Contractor shall permit the GOP or the Procuring Entity to inspect the Contractor's accounts and records relating to the performance of the Contractor and to have them audited by auditors of the GOP or the Procuring Entity, as may be required.

13. Advance Payment

The Procuring Entity shall, upon a written request of the Contractor which shall be submitted as a Contract document, make an advance payment to the Contractor in an amount not exceeding fifteen percent (15%) of the total contract price, to be made in lump sum, or at the most two installments according to a schedule specified in the

SCC, subject to the requirements in Annex "E" of the 2016 revised IRR of RA No. 9184.

14. Progress Payments

The Contractor may submit a request for payment for Work accomplished. Such requests for payment shall be verified and certified by the Procuring Entity's Representative/Project Engineer. Except as otherwise stipulated in the SCC, materials and equipment delivered on the site but not completely put in place shall not be included for payment.

15. Operating and Maintenance Manuals

- 15.1. If required, the Contractor will provide "as built" Drawings and/or operating and maintenance manuals as specified in the SCC.
- 15.2. If the Contractor does not provide the Drawings and/or manuals by the dates stated above, or they do not receive the Procuring Entity's Representative's approval, the Procuring Entity's Representative may withhold the amount stated in the SCC from payments due to the Contractor.

Section V. Special Conditions of Contract

Special Conditions of Contract

GCC Clause	
2	Sectional completion is not specified.
4.1	The Procuring Entity shall give possession of the Site to the Contractor <i>on the start date.</i>
6	The site investigation reports are: NONE
7.2	Fifteen (15) years
10	Dayworks are not applicable to the contract.
11.1	The Contractor shall submit the Program of Work to the Procuring Entity's Representative <u>upon contract signing</u> or within <u>three (3) days</u> of delivery of the Notice of Award.
11.2	The amount to be withheld for late submission of an updated Program of Work is Fifty (50) % of the billed amount. The updating of Program of Work shall be done bi-monthly.
13	The amount of the advance payment is 15% of contract amount and paid in lump sum.
14	No further instruction.
15.1	The date by which operating and maintenance manuals are required is upon completion of the project. The date by which "as built" drawings are required is upon completion of the project.
15.2	The amount to be withheld for failing to produce "as built" drawings and/or operating and maintenance manuals by the date required is one hundred percent (100%) of the final billing.

Section VI. Specifications

PROJECT HIGHLIGHTS

PH 1.0 GENERAL

The project is funded by NPC Mindanao Generation. This project aims to monitor the water elevation of Lake Lanao in compliance with the Presidential Memorandum Order No. 398 and Environmental Compliance Certificate (ECC) for the operations of NPC Agus Power Plants. This will also enhance corporate involvement in the socio-economic and environmental development of the affected communities around Lake Lanao, and further, improve social acceptability of NPC to the people of Municipality of Buadi-Poso Buntong, Lanao del Sur.

The Contractor shall furnish all labor, materials, equipment, tools and other incidental matters necessary to complete the works in accordance with the contracts and approved detailed engineering activities; and other existing laws, rules and regulations relative thereto.

PH 2.0 PROJECT LOCATION

The project is located at Barangay Lumbac, Madalum, Lanao del Sur.

PH 3.0 SCOPE OF WORK

The works and services to be performed by the Contractor for this undertaking shall essentially consist of, but not limited to the Construction of Wharf With Integrated 702 Masl Elevation Marker at Brgy. Lumbac, Madalum, Lanao del Sur with the following scope of works:

1. Mobilization
2. Clearing and Site Preparation
3. Earthworks;
 - 3.1 Earthfilling or Backfilling (Boulder)
4. Concrete Works
5. Reinforcement Steel Bars/DSB Works
6. Roofing, Trusses and Lighting Works
7. Project Landmark Elev.702 Masl gauge marker and signage with stainless lettering works
8. Clean-up Works & Demobilization

PH 4.0 CONTRACT PERIOD

The contractor shall complete the works as specified in Clause 3 within **Ninety (90) calendar days**. The total contract duration is inclusive of six (6) unworkable days considered unfavorable for the execution of work at site. The contract period shall be reckoned from the date of contract effective as specified in the Notice to Proceed.

Handwritten marks: a checkmark, a large 'C' with an arrow, and a signature.

PH 5.0 CONTRACTOR'S CLASSIFICATION

The Contractor must have a valid Philippine Contractors Accreditation Board (PCAB) license of at least **Category C or D- General Engineering** with inter-agency registration and classification of **Small B- Port, Harbor or Offshore Engineering**.

The Contractor must have undertaken similar contracts that involves construction/rehabilitation/expansion of commercial, industrial or office building provided that the contract cost shall be at least equivalent to 50% of ABC.

1 2 3

TECHNICAL SPECIFICATIONS

1.0 SITE PREPARATION

1.1 General

The Work under this Section shall include clearing, grubbing, scalping, obliteration of roadways, clean up and disposal of all debris and other objectionable matter and grading work as directed by the NPC Engineer.

1.2 Requirements

Cleaning shall consist of the removal and disposal of all stumps, vines, bush, grass, roots, vegetation, fences, rocks, masonry and debris within the limits and rights-of-way of the project.

Disposal of non-combustible waste shall be accomplished by removal from job-site by the Construction Officer. In no case shall the Construction Officer, prior to commencement of operation, or permission from the property owner, such permission to include the site location, method of disposal and any restrictions or conditions that may form part of the agreement between the Contractor and the NPC Engineer.

The grading work shall be done after clearing the site of stumps, roots, grass, etc. Grading work shall be general smoothening the ground surface of the site such as covering holes left by stumps, etc. and leveling sharp and steep grades.

1.3 Method of Measurement and Basis of Payment

For purposes of progress payments, the quantity to be paid for shall be the total square meter of the area affected in the construction of wharf, in which price and payment shall constitute full compensation for all materials, labor, plant, equipment, tools and incidentals necessary to complete the work.

2.0 HAND-LAID ROCK EMBANKMENT

2.1 Description

This Item shall consist of hand-laid rock embankment, as designated in the Bid Schedule, constructed in accordance with this Specification and in conformity with the lines and grades shown on the Plans or established by the NPC Engineer.

2.2 Material Requirements

Boulders shall be sound and durable and furnished in a well-balanced ranged of sizes (max/min diameter range: 10" dia. +/- 3" dia.) meeting the requirements herein.

Handwritten marks: a large 'C' and a checkmark.

Unless otherwise provided by the Plans or Special provisions, all boulders shall be more than 0.015 cubic meter in volume and not less than 75 percent of the total volume of rock embankment and shall consist of stones 0.03 cubic meter in volume. boulders obtained from excavation performed under this contract may be used. Adobe stone shall not be used, unless otherwise specified.

2.3 Construction Requirements

Sufficient excavation shall be made to expose a foundation bed that is satisfactory to the NPC Engineer. The boulders shall be founded on this bed and laid to the lines and dimensions required.

Boulders shall be laid flat and securely placed with broken joint lines. The larger boulders shall generally be located in the lower part of the structure and voids shall be eliminated to the extent possible. Spalls smaller than the minimum stone size specified in Material Requirements, shall be used to check the larger stones solidly in position and to substantially fill voids between the major stones as laid in the embankment. The exposed face of the rock mass shall be reasonably uniform, with no projections of more than 150 mm, beyond the neat lines shown on the Plans or as directed by the NPC Engineer.

Backfill adjacent to the hand-laid rock embankment shall be filled entirely with acceptable material coming from excavation items and compacted.

2.4 Method of Measurement

The quantity to be paid for will be the number of cubic meter of hand-laid rock embankment measured in place, completed and accepted, which price and payment shall constitute full compensation for furnishing, selecting, and transporting stones, for placing stones by hand, for backfilling, and for all labor, equipment, tools and incidentals necessary to complete the Item.

3.0 GROUTED RIPRAP

3.1 Description

This Item shall consist of the furnishing and placing of riprap with grout as the case may be, with filter backing, furnished and constructed in accordance with this Specification and to the lines and grades and dimensions shown on the Plans.

3.2 Material Requirements

3.2.1 Boulders

Boulders shall be sound and durable and furnished in a well-balanced ranged of sizes (max/min diameter range: 10" dia. +/- 3" dia.) meeting the requirements herein.

Unless otherwise provided by the Plans or Special provisions, all boulders shall be more than 0.015 cubic meter in volume and not less than 75 percent of the total volume of rock embankment and shall consist of stones 0.03 cubic meter in volume. boulders obtained from excavation performed under this contract may be used. Adobe stone shall not be used, unless otherwise specified.

3.2.2 Filter Materials

Handwritten marks: a large 'C' and a checkmark.

When required, the riprap shall be placed on a filter layer to prevent fine embankment materials to be washed out through the voids of the face stones. The grading of the filter material shall be as specified on the Plans, or in the Special Provisions. If not so specified, it will be required that D15 of the filter is at least 4 times the size D85 for the embankment material, where D15 percent and 85 percent, respectively, passing (by mass) in a grain size analysis. Fine aggregate passing grading requirements for Item 405, Structural Concrete, will satisfy foregoing requirements.

3.2.3 Mortar

Mortar for grouted riprap shall consist of sand, cement and water conforming to the requirements given under Item 405, Structural Concrete, mixed in the proportion of one part cement to three parts sand by volume, and sufficient water to obtain the required consistency.

The horizontal and vertical contact surface between stones shall be embedded by cement mortar having a minimum thickness of 20 mm. Sufficient mortar shall be used to completely fill all voids leaving the face of the stones exposed.

3.3 Construction Requirements

3.3.1 Excavation

The bed for riprap shall be excavated to the required depths and properly compacted, trimmed and shaped.

The riprap shall be founded in a toe trench dug below the depth of scour as shown on the Plans or as ordered by the Engineer. The toe trench shall be filled with stone of the same class as that specified for the riprap, unless otherwise specified.

3.3.2 Placing

Stones placed below the water line shall be distributed so that the minimum thickness of the riprap is not less than that specified.

Stones above the water line shall be placed by hand or individually by machines. They shall be laid with close, broken joints and shall be firmly bedded into the slope and against the adjoining stones. Each stone shall be laid with its longest axis perpendicular to the slope in close contact with each adjacent stone. The riprap shall be thoroughly rammed into place as construction progresses and the finished surface shall present an even, tight surface. Interstices between stones shall be filled with small broken fragments firmly rammed into place.

The surface of riprap shall not vary from the theoretical surface by more than 100 mm at any point.

3.3.3 Grouting

When grouted riprap is specified, stones shall be placed by hand as specified for riprap placed above the water line. The spaces between the stones shall then be filled with cement mortar throughout the thickness of the riprap as specified in mortar. Sufficient mortar shall be used to completely fill all voids, except that the face surface of the stones shall be left exposed.

Handwritten blue ink signature and initials, possibly reading 'N' and 'S'.

Grout shall be placed from bottom to top of the surface swept with a stiff broom. After grouting is completed, the surface shall be cured as specified in Item 405, Structural Concrete for a period of at least three days.

The stones shall also be laid in a manner that the vertical and horizontal alignments of the exposed face shall, as possible be maintained in a straight line.

3.3.4 Weepholes

All walls and abutments shall be provided with weepholes. Unless otherwise shown on the Plans or directed by the NPC Engineer, the weepholes shall be placed horizontally at the lowest points where free outlets for water can be obtained and shall be spaced at not more than 2 m center to center in a staggered manner. The length of the weepholes shall not be less than the thickness of the walls of the abutment and shall be at least 50 mm diameter PVC or other pipe materials accepted by the NPC Engineer. Weepholes must be provided with filter bags as specified in special provision or as directed by the NPC Engineer.

3.4 Method of Measurement and Basis of Payment

The quantities to be measured for payment of grouted riprap shall be included in Item No. 2 Method of Measurement.

The quantities measured as shall be paid for at the contract unit price, respectively, for each of the Pay Items listed below and shown in the Bid Schedule, which price and payment shall be full compensation for excavation and preparation of the bed, for furnishing and placing all materials including backfill and all additional fill to bring the riprap bed up to the lines, grades and dimensions shown on the plans, and all labor, equipment, tools and incidentals necessary to complete the Item.

4.0 AGGREGATE BASE COURSE

4.1 Description

This item shall consist of furnishing, placing and compacting an aggregate subbase course on a prepared subgrade in accordance with this Specification and the lines, grades and cross-sections shown on the Plans, or as directed by the NPC Engineer.

4.2 Material Requirements

Aggregate for subbase shall consist of hard, durable particles or fragments of crushed stone, crushed slag, or crushed or natural gravel and filler of natural or crushed sand or other finely divided mineral matter. The composite material shall be free from vegetable matter and lumps or balls of clay, and shall be of such nature that it can be compacted readily to form a firm, stable subbase.

The subbase material shall conform to Table 200.1, Grading Requirements

Table 200.1 – Grading Requirements

Sieve Designation		Mass Percent Passing
Standard, mm	Alternate US Standard	

50	2"	100
25	1"	55 – 85
9.5	3/8"	40 – 75
0.075	No. 200	0 - 12

The fraction passing the 0.075 mm (No. 200) sieve shall not be greater than 0.66 (two thirds) of the fraction passing the 0.425 mm (No. 40) sieve.

The fraction passing the 0.425 mm (No. 40) sieve shall have a liquid limit not greater than 35 and plasticity index not greater than 12 as determined by AASHTO T 89 and T 90, respectively.

The coarse portion, retained on a 2.00 mm (No. 10) sieve, shall have a mass percent of wear not exceeding 50 by the Los Angeles Abrasion Tests as determined by AASHTO T 96.

The material shall have a soaked CBR value of not less than 25% as determined by AASHTO T 193. The CBR value shall be obtained at the maximum dry density and determined by AASHTO T 180, Method D.

4.3 Construction Requirements

4.3.1 Preparation of Existing Surface

The existing surface shall be graded and finished as provided under Item 105, Subgrade Preparation, before placing the subbase material.

4.3.2 Placing

The aggregate subbase material shall be placed at a uniform mixture on a prepared subgrade in a quantity which will provide the required compacted thickness. When more than one layer is required, each layer shall be shaped and compacted before the succeeding layer is placed.

The placing of material shall begin at the point designated by the Engineer. Placing shall be from vehicles especially equipped to distribute the material in a continuous uniform layer or windrow. The layer or windrow shall be of such size that when spread and compacted the finished layer be in reasonably close conformity to the nominal thickness shown on the Plans.

When hauling is done over previously placed material, hauling equipment shall be dispersed uniformly over the entire surface of the previously constructed layer, to minimize rutting or uneven compaction.

4.3.3 Spreading and Compacting

When uniformly mixed, the mixture shall be spread to the plan thickness, for compaction.

Where the required thickness is 150 mm or less, the material may be spread and compacted in one layer. Where the required thickness is more than 150 mm, the aggregate subbase shall be spread and compacted in two or more layers of approximately equal thickness, and the maximum compacted thickness of any layer

shall not exceed 150 mm. All subsequent layers shall be spread and compacted in a similar manner.

The moisture content of subbase material shall, if necessary, be adjusted prior to compaction by watering with approved sprinklers mounted on trucks or by drying out, as required in order to obtain the required compaction.

Immediately following final spreading and smoothing, each layer shall be compacted to the full width by means of approved compaction equipment. Rolling shall progress gradually from the sides to the center, parallel to the centerline of the road and shall continue until the whole surface has been rolled. Any irregularities or depressions that develop shall be corrected by loosening the material at these places and adding or removing material until surface is smooth and uniform. Along curbs, headers, and walls, and at all places not accessible to the roller, the subbase material shall be compacted thoroughly with approved tampers or compactors.

If the layer of subbase material, or part thereof, does not conform to the required finish, the Contractor shall, at his own expense, make the necessary corrections. Compaction of each layer shall continue until a field density of at least 100 percent of the maximum dry density determined in accordance with AASHTO T 180, Method D has been achieved. In-place density determination shall be made in accordance with AASHTO T 191.

4.3.4 Trial Sections

Before subbase construction is started, the Contractor shall spread and compact trial sections as directed by the Engineer. The purpose of the trial sections is to check the suitability of the materials and the efficiency of the equipment and construction method which is proposed to be used by the Contractor. Therefore, the Contractor must use the same material, equipment and

procedures that he proposes to use for the main work. One trial section of about 500 m² shall be made for every type of material and/or construction equipment/procedure proposed for use.

After final compaction of each trial section, the Contractor shall carry out such field density tests and other tests required as directed by the Engineer.

If a trial section shows that the proposed materials, equipment or procedures in the Engineer's opinion are not suitable for subbase, the material shall be removed at the Contractor's expense, and a new trial section shall be constructed.

If the basic conditions regarding the type of material or procedure change during the execution of the work, new trial sections shall be constructed.

4.3.5 Tolerances

Aggregate subbase shall be spread with equipment that will provide a uniform layer which when compacted will conform to the designed level and transverse slopes as shown on the Plans. The allowable tolerances shall be as specified hereunder:

Permitted variation from design ± 20 mm

THICKNESS OF LAYER

Permitted variation from design $+10$ mm

Handwritten marks: a large 'C' and a checkmark.

LEVEL OF SURFACE -20 mm
+10 mm -
Permitted SURFACE IRREGULARITY 20mm
Measured by 3-m straight-edge
Permitted variation from design ± 20 mm
CROSSFALL OR CAMBER
Permitted variation from design ± 20 mm
LONGITUDINAL GRADE over 2.5 m in length

4.4 Method of Measurement and Basis of Payment

Aggregate Subbase Course will be measured by the cubic meter (m³). The quantity to be paid for shall be the design volume compacted in-place as shown on the Plans, and accepted in the completed course. No allowance will be given for materials placed outside the design limits shown on the cross-sections. Trial sections shall not be measured separately but shall be included in the quantity of subbase herein measured.

The accepted quantities, measured as prescribed in Section 4, shall be paid for at the contract unit price for Aggregate Subbase Course which price and payment shall be full compensation for furnishings and placing all materials, including all labor, equipment, tools and incidentals necessary to complete the work prescribed in this Item.

5.0 REINFORCEMENT STEEL BAR WORKS

5.1 General Scope

This item shall consist of furnishing, bending, fabricating and placing of steel reinforcement of the type, size, shape and grade required in accordance with this Specification and in conformity with the requirements shown on the Plans or as directed by the NPC Engineer.

5.2 Materials

Reinforcing steel shall conform when tested to the requirements of the following Specifications:

Deformed Billet-Steel Bars for Concrete Reinforcement	AASHTO M 31 (ASTM A 615/PNS 49)
Deformed Steel Wire for Concrete Reinforcement	AASHTO M 225 (ASTM A 496)
Welded Steel Wire Fabric for Concrete Reinforcement	AASHTO M 55 (ASTM A 185)
Cold-Drawn Steel Wire for Concrete Reinforcement	AASHTO M 32 (ASTM A 82)
Fabricated Steel Bar or Rod Mats for Concrete Reinforcement	AASHTO M 54 (ASTM A 184)
Welded Deformed Steel Wire Fabric	AASHTO M 221 (ASTM A 497)

of Concrete Reinforcement	
Plastic Coated Dowel Bars	AASHTO M 254 Type A
Low Alloy Steel Deformed Bars for Concrete Reinforcement	ASTM A 206

Bar reinforcement for concrete structures, except No. 2 bars shall be deformed in accordance with AASHTO M 42, M 31 and M 53 for Nos. 3 to 11.

Dowel and tie bars shall conform to the requirements of AASHTO M 31 (ASTM A 615/PNS 49) or AASHTO M 42 except that rail steel shall not be used for tie bars that are to be bent and restraightened during construction. Tie bars shall be deformed bars. Dowel bars shall be plain round bars. They shall be free from burring or other deformation restricting slippage in the concrete. Before delivery to the site of the work, a minimum of one half (1/2) the length of each dowel bar shall be painted with one coat of approved lead or tar paint.

The sleeves for dowel bars shall be metal of an approved design to cover 50 mm, plus or minus 6.3 mm of the dowel, with a closed end, and with a suitable stop to hold the end of the sleeve at least 25 mm from the end of the dowel bar. Sleeves shall be of such design that they do not collapse during construction.

Plastic coated dowel bar conforming to AASHTO M 254 may be used.

5.3 Workmanship

All steel reinforcement shall be accurately placed in the position shown on the Plans or as required by the NPC Engineer and firmly held there during the placing and setting of the concrete. Bars shall be tied at all intersections except where 238 spacing is less than 300 mm in each directions, in which case, alternate intersections shall be tied. Ties shall be fastened on the inside.

Steel reinforcement shall be stored above the surface of the ground upon platforms, skids, or other supports and shall be protected as far as practicable from mechanical injury and surface deterioration caused by exposure to conditions producing rust. When placed in the work, reinforcement shall be free from dirt, detrimental rust, loose scale, paint, grease, oil, or other foreign materials. Reinforcement shall be free from injurious defects such as cracks and laminations.

All reinforcement shall be furnished in the full lengths indicated on the Plans. Splicing of bars, except where shown on the Plans, will not be permitted without the written approval of the Engineer. Splices shall be staggered as far as possible and with a minimum separation of not less than 40 bar diameters. Not more than one-third of the bars may be spliced in the same cross-section, except where shown on the Plans.

5.4 Measurement and Payment

The quantity of concrete to be paid shall be the quantity shown in the Bid Schedule in kilogram.

The accepted quantity, measured as prescribed in the Bid Schedule, shall be paid for at the contract unit price for Reinforcing Steel which price and payment shall be full compensation for furnishing and placing all materials, including all labor, equipment, tools and incidentals necessary to complete the work prescribed in this Item.

6.0 STRUCTURAL CONCRETE WORKS

6.1. General Scope

This item shall consist of furnishing, placing and finishing concrete in accordance with the specification and conforming to the lines, grades, and dimension shown on the plans.

6.2 Materials

6.2.1 Portland Cement and Masonry Cement

Cement shall conform to the requirements of the following cited Specifications for the type specified or permitted.

Type	Specifications
Portland Cement	AASHTO M 85 (ASTM C 150)
Blended Hydraulic Cements	AASHTO M 240 (ASTM C 595)
Masonry Cement	AASHTO M 150 (ASTM C 91)

Only Type I Portland Cement shall be used unless otherwise provided for in the Special Provisions. Different brands or the same brands from different mills shall not be mixed nor shall they be used alternately unless the mix is approved by the Engineer.

The Contractor shall provide suitable means of storing and protecting the cement against dampness. Cement which, for any reason, has become partially set or which contains lumps of caked cement will be rejected. Cement salvaged from discarded or used bags shall not be used.

The compressive strength of mortar samples tested at 7 days can be considered for acceptance of cement quality provided that the strength of the samples at 7 days is not less than 23.46 MPa which is 85% of the compressive strength requirement for 28 days (27.6 MPa) when tested in accordance with ASTM C 150.

6.2.2 Concrete Aggregates

Handwritten marks: a large 'C' with a checkmark, and some other scribbles.

6.2.1 Fine Aggregate

It shall consist of natural sand, stone screenings or other inert materials with similar characteristics, or combinations thereof, having hard, strong and durable particles. Fine aggregate from different sources of supply shall not be mixed or stored in the same pile nor used alternately in the same class of concrete without the approval of the Engineer.

It shall not contain more than three (3) mass percent of material passing the 0.075 mm (No. 200 sieve) by washing nor more than one (1) mass percent each of clay lumps or shale. If the fine aggregate is subjected to five (5) cycles of the sodium sulfate soundness test, the weighted loss shall not exceed 10 mass percent. It shall be free from injurious amounts of organic impurities.

The fine aggregate shall be well-graded from coarse to fine and shall conform to the Grading Requirements listed below:

Grading Requirement for Fine Aggregate

Sieve Designation	Mass Percent Passing
9.5 mm (3/8 in)	100
4.75 mm (No. 4)	95 – 100
2.36 mm (No. 8)	-
1.18 mm (No. 16)	45 – 80
0.600 mm (No. 30)	-
0.300 mm (No. 50)	5 – 30
0.150 mm (No. 100)	0 – 10

6.2.2 Coarse Aggregate

It shall consist of crushed stone, gravel, blast furnace slag, or other approved inert materials of similar characteristics, or combinations thereof, having hard, strong, durable pieces and free from any adherent coatings.

It shall contain not more than one (1) mass percent of material passing the 0.075 mm (No. 200) sieve, not more than 0.25 mass percent of clay lumps, nor more than 3.5 mass percent of soft fragments.

If the coarse aggregate is subjected to five (5) cycles of the sodium sulfate soundness test, the weighted loss shall not exceed 12 mass percent. It shall have a mass percent of wear not exceeding 40 when tested by AASHTO T 96.

Only one grading specification shall be used from any one source.

Grading Requirement for Coarse Aggregate

Sieve Designation		Mass Percent Passing		
Standard (mm)	Alternate U. S. Standard	Grading g A	Grading g B	Grading C
75.00	3 in.	100	-	-

63.00	2-1/2 in.	90-100	100	100
50.00	2 in.	-	90-100	95-100
37.5	1-1/2 in.	25-60	35-70	-
25.0	1 in.	-	0-15	35-70
19.0	3/4 in.	0-10	-	-
12.5	1/2 in.	0-5	0-5	10-30
4.75	No. 4	-	-	0-5

6.2.3 Water

Water used in mixing, curing or other designated application shall be reasonably clean and free of oil, salt, acid, alkali, grass or other substances injurious to the finished product. Water will be tested in accordance with and shall meet the requirements of Item 714, Water. Water which is drinkable may be used without test. Where the source of water is shallow, the intake shall be so enclosed as to exclude silt, mud, grass or other foreign materials.

6.2.4 Workmanship

The proportions of aggregate to cement for any concrete shall be such as to produce a mixture which will work readily into the corners and angles of the form and around reinforcement with the method of placing employed on the work, but without permitting the materials to segregate or excess free water to collect on the surface. The methods of measuring concrete materials shall be such that the proportions can be accurately controlled and easily checked at any time during the work.

The proportion of fine aggregate, coarse aggregate and cement to attain the required strength shall be 1:2:4, 1 part Cement in bag; 2 part Sand in cubic meter; and 4 part Gravel in cubic meter.

Water-cement ratios for strengths greater than that shown in Table below may be used provided that the relationship between strength and water-cement ratio for the materials to be used has been previously established by reliable test data and the resulting concrete satisfies the requirements of concrete quality.

MAXIMUM PERMISSIBLE WATER-CEMENT RATIOS FOR CONCRETE

Specified compressive strength at 28 days, psi /fc	Maximum permissible water-cement ratio			
	Non air-entrained concrete		Air-entrained concrete	
	U.S. gal. per 42.6 kg. bag of cement	Absolute ratio by weight	U.S. gal. per 42.6 kg. bag of cement	Absolute ratio by weight
2500	7 1/4	0.642	6 1/4	0.554
3000	6 1/2	0.576	5 1/4	0.465
3500	5 3/4	0.510	4 1/2	0.399

4000	5	0.443	4	0.354
------	---	-------	---	-------

6.2.5 Measurement And Payment

The quantity of concrete to be paid shall be the quantity shown in the Bid Schedule in cubic meter, unless changes in design are made in which case the quantity shown in the Bid Schedule will be adjusted by the amount of the change for the purpose of payment. No deduction will be made for the volume occupied by the pipe less than 101 mm (4") in diameter nor for reinforcing steel, anchors, weepholes or expansion materials.

The accepted quantities of structural concrete completed in place will be paid for at the contract unit price for cubic meter as indicated on the Bid Schedule. Such prices and payment shall be full compensation for furnishing all materials, including metal water stops, joints, joint fillers, weep holes, and rock backing and timber bumpers; for all form and false work; for mixing, placing, furnishing, and curing the concrete; and for all labor, materials, equipment, tools and incidentals necessary to complete the item.

7.0 WAITING SHED, LIGHTINGS & CONCRETE BOLLARD

7.1 General Scope

This item shall consist of furnishing, fabricating, installation/ placing of the waiting shed, lightings and concrete bollard, as well as painting in accordance with the Specification and in conformity with the requirements shown on the Plans or as directed by the NPC Engineer.

7.2 Materials

Concrete works and its reinforcement are specified under Section No. 5, Reinforcement Works and Section No. 6, Structural Concrete Works.

Trusses & Roofing Materials

Materials for steel trusses shall be of the best quality of their kind, well graded and within the all allowable distortions, however, they shall be free from flakes, corrosion, scale of fragments that could reduce the resistance and durability or injure the external appearance.

Pre-painted Long Span Rib Type Sheet, Ga. 26 shall be fabricated from cold rolled galvanized iron sheets specially tempered steel for extra strength and durability. It shall conform to the material requirements defined in PNS 67: 1985. Profile section in identifying the architectural molded rib tube used are as follows: Regular corrugated,

Quad-rib, Tri-wave, Rib-wide, twin-rib, etc. Desired color shall be subject to the approval of the Architect/Engineer.

Gutters, Valleys, Flashings Hip and Ridge roll shall be fabricated from gauge 24 (.600 mm thick) cold-rolled plain galvanized iron sheets specially tempered steel. Profile section shall be as indicated on the Plans.

Fastening hardware shall be of galvanized iron straps and rivets. G.I. straps are of .500 mm thick x 16 mm wide x 267 mm long (gauge 26 x 5/8" x 10-1/2") and standard rivets.

Solar Panel:

Light Output	300 Watts
Solar Panel	Monocrystalline
Luminous Flux	36,000 lm
Light Source	High Brightness SMD LED
Dimension	L: 900 x W: 220 x Thick: 45 mm
Color Temperature	6000 – 6500 K / Daylight
Visual Angle	120° Degrees
Material	Aluminum Housing
Battery Type	Lithium Battery
Motion Sensor	With Built-in Motion Sensor (Optional Option: Customized steady lighting that slowly reduce brightness from 100% to 0% in 12 hours)
Work Time	≥ 10 Hrs Full Power / ≥ 24 Hrs Half Power
Working Temp.	Charging: 0°C ~+ 60°C, Discharging: -20°C ~+ 60°C, Storage: 0°C ~+ 45°C
Lifetime	> 50,000 hours
IP Rating	IP 65

Lamp Post/Pole Straight Type

Pole Height	18m from the FFL
-------------	------------------

Bottom Diameter	4 – 6 Inches
Top Diameter	2 – 3 Inches
Base Plate	6 – 10 Inches
Pole Pitch	L 12 Inches & 20 Inches x 16 & 19mm Diameter
Pole Protection	Hot Dipped / Electro Galvanized
Material	Steel Lamp Post

7.3 WORKMANSHIP

Steel Works & Installation of Roofing:

Materials shall conform to the respective specifications specified herein. Materials not otherwise specified herein shall conform to the AISC “manual of Steel Construction”.

Structural Steel: ASTM A36

Steel Pipe: ASTM A53, Type E or S, Grade B, ASTM A501.

Steel W-Shape Piles

(Soldier Piles): ASTM A328

All welding works shall be as indicated on the drawings and shall conform to AWS D1.1 77 “Structural Welding Code”. Unless specified on the drawings, fillet welds shall be a minimum of 5mm (3/16”) and welding electrodes shall be with a tensile strength of 485 MPa.

All welding works shall be executed by the AWS D1.1 qualified welders, welding operators and trackers, whose workmanship shall be subject to the approval of NPC.

Roofing installation shall start by placing the first sheet in position with the downturned edge in line with other building elements and fastened to supports as recommended.

Place the downturned edge of the next sheet over the edge of the first sheet, to provide side lap and hold the side lap firmly in place. Continue the same procedure for subsequent sheets until the whole roofing area is covered and/or (Adopt installation procedure provided in the instruction manual for each type of Architectural molded rib profile section).

Pre-painted steel roofing, walling products and accessories should be delivered to the jobsite in strapped bundles. Sheets and/or bundles shall be neatly stacked in the ground and if left in the open it shall be protected by covering the stack materials with loose tarpaulin.

Where so indicated on the Plans, structural members shall be joined by welding. The welds shall be of the size and type indicated and shall be made by competent operators.

Lamp Post with Solar Power Lighting:

Lamp post and Solar Power Lighting and its accessories shall be inspected before deliver to the project site. Lamp post shall be installed securely and properly.

Integrated solar led street light cannot work without sunshine charging, please select the suitable product model according to the local sunshine radiation and the annual total radiation.

Integrated solar led street light adopts the long life Lithium battery for storing energy, charging temperature at day time is between: $0^{\circ}\text{C}\sim+65^{\circ}\text{C}$, when temperature goes lower than 0°C , the control system will stop automatically to protect the battery, and it will revive to charge the battery while temperature goes higher than 0°C . Discharging temperature at night is between: $-20^{\circ}\text{C}\sim+65^{\circ}\text{C}$, any ambient beyond will bring damage to the battery. Please confirm your local extreme temperature is suitable for above while selecting the street light.

Battery of the "integrated solar led street light" can be stored for 6 months long after full charged, and please examine, charge it periodically after long time transportation to prevent damage.

While installed in Northern Hemisphere, please make sure the surface of the solar panel to be facing the South to collect maximum sunshine radiation, while installed in Southern Hemisphere, please make sure the surface of the solar panel to be facing the North to collect maximum sunshine radiation. At the same time please keep it away from any shadow of house, trees etc.

Keep cleaning the surface of the integrated solar led street light with normal detergent to get maximum power generation, clean the dust or tree leaves or any grease.

7.4 Measurement and Payment

The unit of measure shall be in lot.

The accepted quantity, measured as prescribed in the Bid Schedule, shall be paid for at the contract unit price which price and payment shall be full compensation for furnishing and placing all materials, including all labor, equipment, tools and incidentals necessary to complete the work prescribed in this Item.

8.0 ELEVATION GAUGE MARKER AND SIGNAGE

8.1 General Scope

This item shall consist of furnishing, fabricating and placing of the NPC 702masl marker of the type, size, shape and grade required, as well as painting of the completed Wharf in accordance with the Specification and in conformity with the requirements shown on the Plans or as directed by the NPC Engineer.

8.2 Materials

Elevation Gauge Marker shall be prefabricated 28mmx28mmx3mx1/8"thk. Stainless Square Tube engraved lettering for 702 Masl. Gauge Marker.

4-1/2" height x 1" x 1/8 thk. Stainless Lettering and 40cm dia. NPC Logo shall be welded in Ga. 21 G.I. Plain Sheet with the back frame/ support of 1-1/2"x1-1/2"x5mm thk. Angle Bar & Flat Bar, 1-1/2"x5mm thk. and for the color of paint, refer to the approved plans.

All paint materials shall meet the requirements of the Philippine National Standard Specifications for Paintings.

Paints shall be brought to the Site in tightly closeable, convenient, original containers, if nothing to the contrary is stipulated in the Specifications. The containers shall be marked in a durable manner with the following particulars:

- Maker
- Paint and relevant thinner
- Gross and net weights
- Date of supply by the maker's factory

With the exception of ready-mixed materials in original containers, all mixing shall be done at the job site. No materials are to be reduced or changed except as specified by the Manufacturer of said materials.

Surfaces to be painted must be thoroughly inspected. There might be some portion that needs further re-surfing and finishing.

8.3 Workmanship

Before the installation of Gauge marker and Signage, the NPC Engineer shall be inspected first the place where the gauge marker and signage fabricated. The gauge marker shall be bolted tightly and secured in the precast column.

The signage shall be placed and welded in the visible part of waiting shed. It shall be secured and installed properly. The clearance height will be identified by the NPC Engineer.

SECTION VII- SPECIFICATIONS

PR NO/REF. NO.: MG-CDD22-011/INFRA2022-CDD-029

Metal/stainless shall be clean, dry and free from mill scale and rust. Remove all grease and oil from surfaces. Wash unprimed galvanized metal with etching solution and allow it to dry.

Paints when applied by brush shall become non-fluid, thick enough to lay down as adequate film of wet paint. Brush marks shall flow out after application of paint.

Paints made for application by roller must be similar to brushing paint. It must be nonstick when thinned to spraying viscosity so that it will break up easily into droplets.

8.4 Measurement And Payment

The unit of measure shall be in lot.

The accepted quantity, measured as prescribed in the Bid Schedule, shall be paid for at the contract unit price which price and payment shall be full compensation for furnishing and placing all materials, including all labor, equipment, tools and incidentals necessary to complete the work prescribed in this Item.

9.0 CLEARING AND DEMOBILIZATION**9.1 General Scope**

This item shall consist of the disposition of entire Contractor's camp facilities, clearing and cleaning at the work site.

9.2 Materials

None

9.3 Workmanship

Before moving out, the contractor shall restore the orderly state of worksite by clearing all temporary structures. Remove all excess/waste materials and store in designated areas.

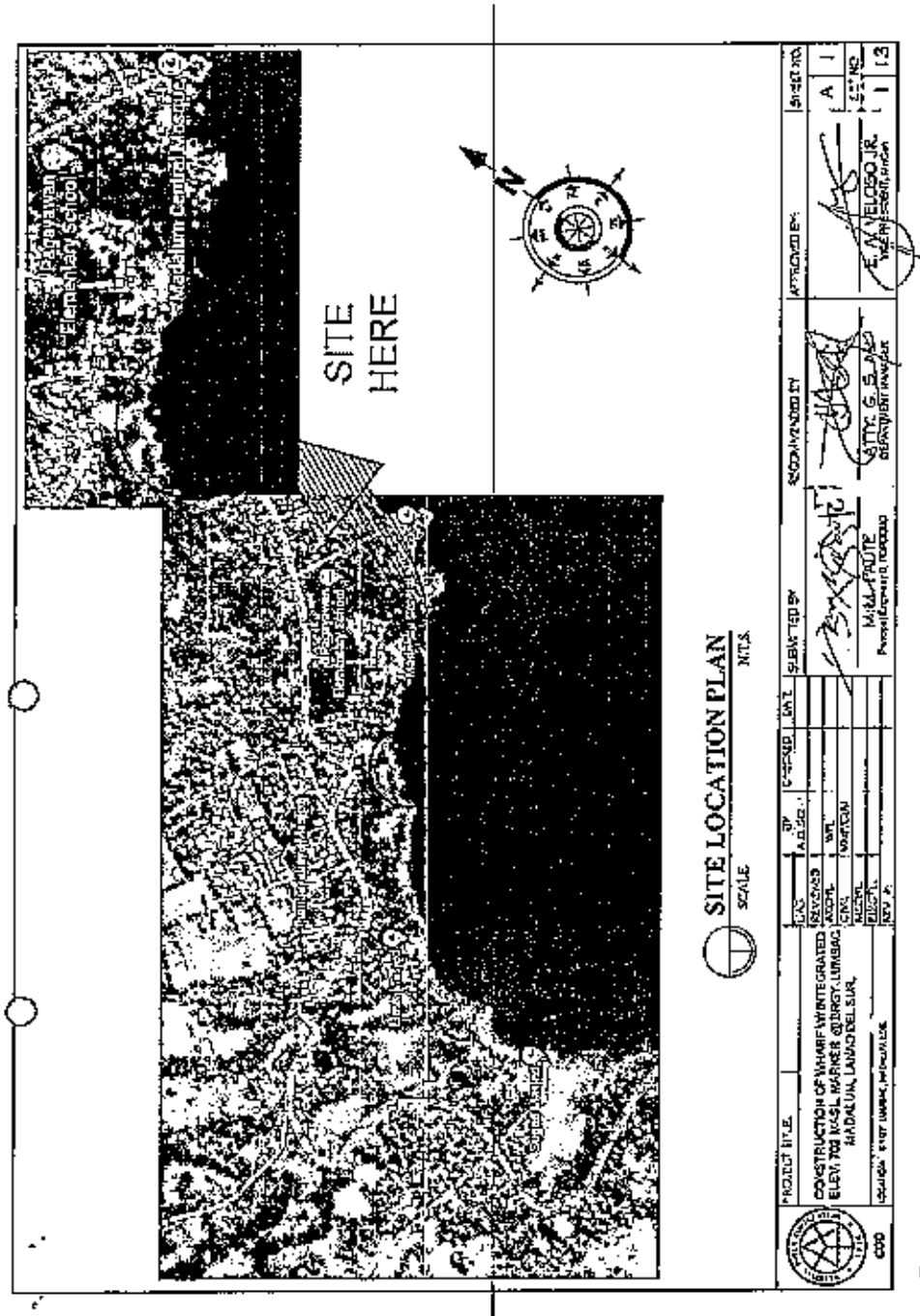
Before the Contractor will demobilize its construction equipment/ tools, materials and crew, he shall secure approval from NPC and a joint inspection with the NPC inspector and Contractor will be conducted to make sure that all his accomplishment / work that needs remedial attention or correction shall be done prior to the issuance of the Certificate of Completion.

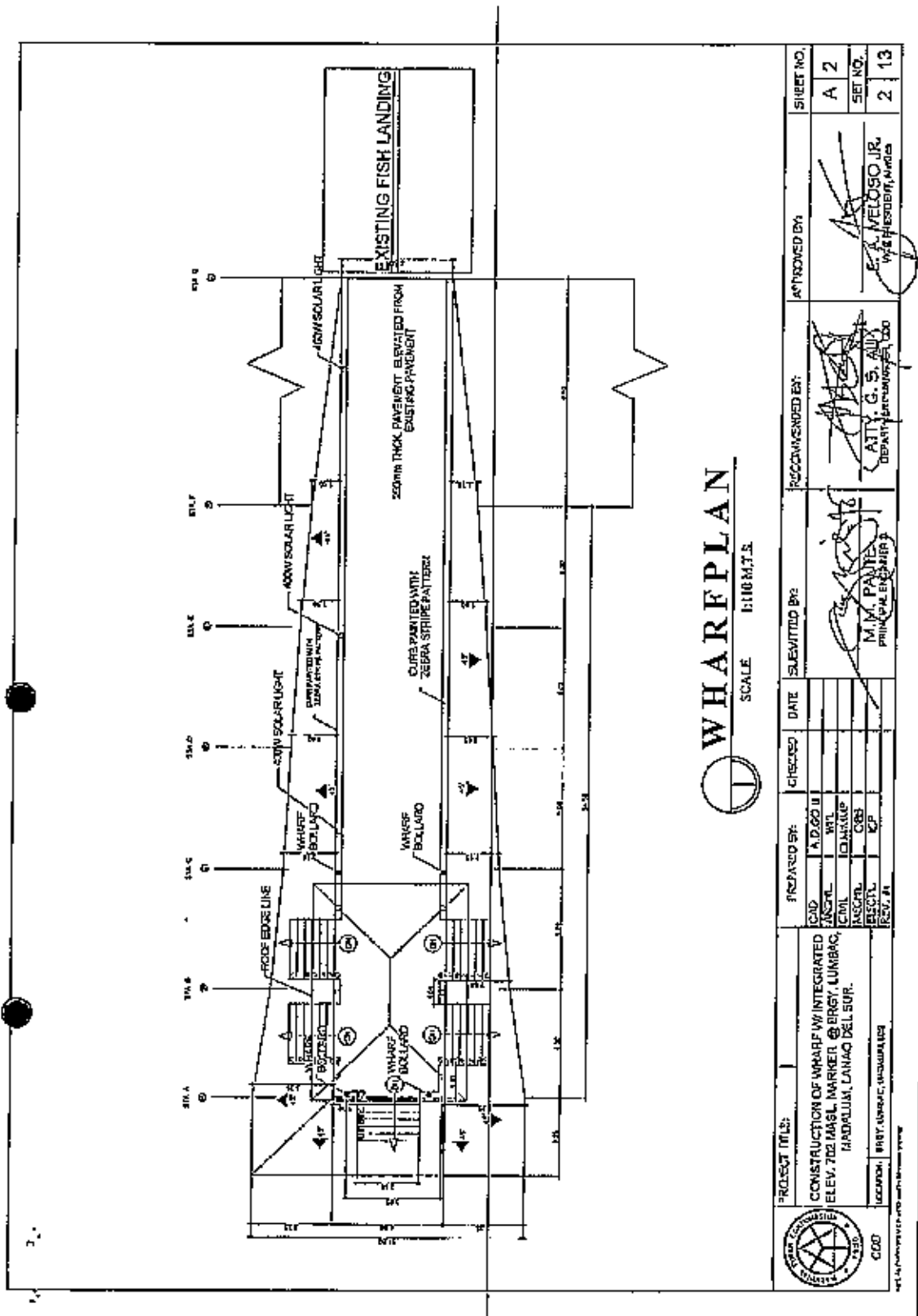
9.4 Measurement And Payment

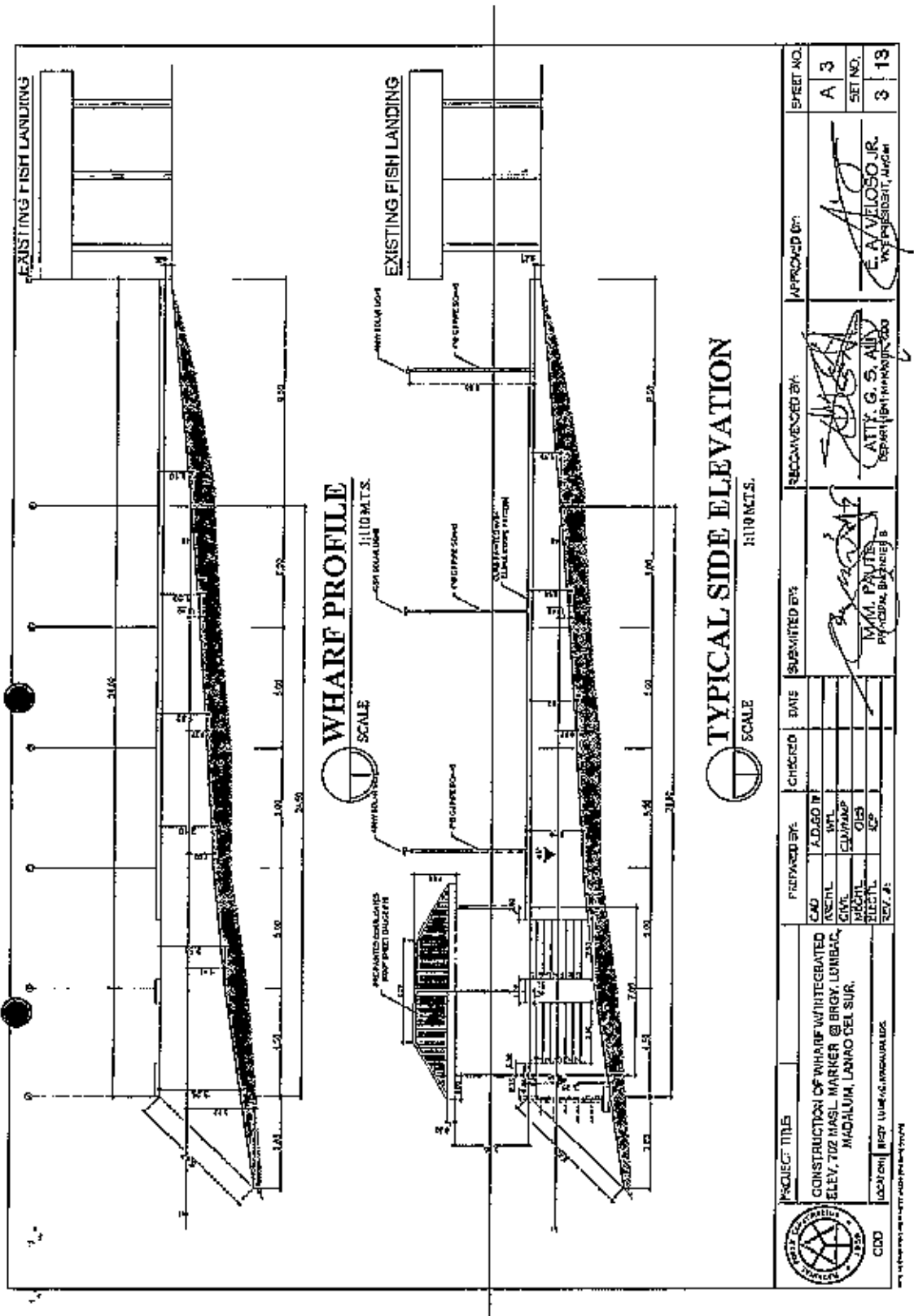
Work prescribed herein shall not be measured and paid separately; same shall be deemed to be included in pay items for other items for work.

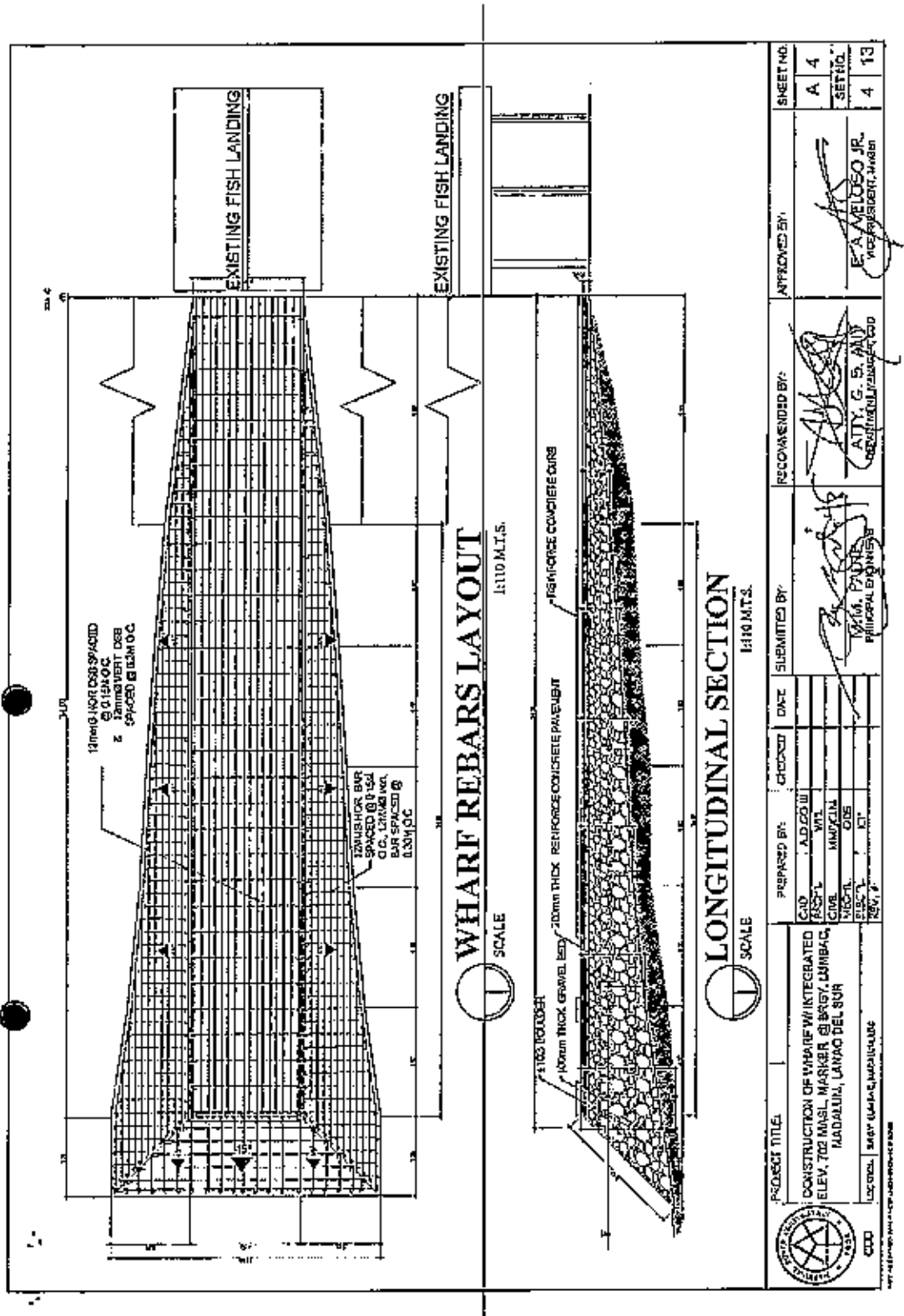
Section VII. Drawings

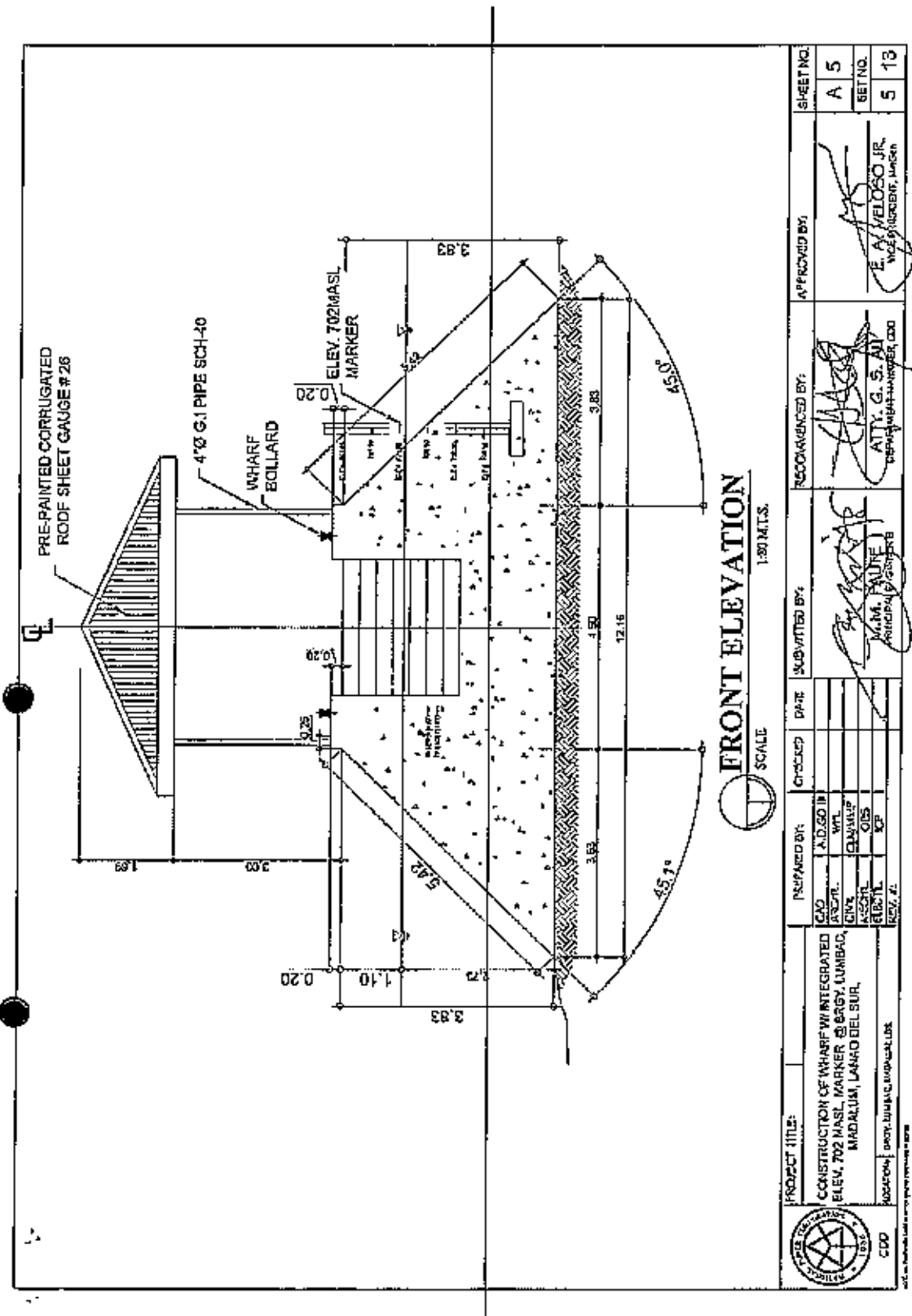
<i>Sheet No. 1/13</i>	– <i>SITE LOCATION PLAN</i>
<i>Sheet No. 2/13</i>	– <i>WHARF PLAN</i>
<i>Sheet No. 3/13</i>	– <i>TYPICAL SIDE ELEVATION & WHARF PROFILE</i>
<i>Sheet No. 4/13</i>	– <i>LONGITUDINAL SECTION AND WHARF REBARS LAYOUT</i>
<i>Sheet No. 5/13</i>	– <i>FRONT ELEVATION</i>
<i>Sheet No. 6/13</i>	– <i>SECTION “A”</i>
<i>Sheet No. 7/13</i>	– <i>WHARF TYP. SECTION DET.</i>
<i>Sheet No. 8/13</i>	– <i>WHARF SHED DETAIL</i>
<i>Sheet No. 9/13</i>	– <i>ROOF FRAMING PLAN AND ROOF PLAN</i>
<i>Sheet No. 10/13</i>	– <i>TRUSS DETAILS</i>
<i>Sheet No. 11/13</i>	– <i>CONC. BOLLARD & STAIR DETAILS, WATER GAUGE LEVEL</i>
<i>Sheet No. 12/13</i>	– <i>FOOTING & MARKER COLUMN DETAIL, SOLAR LIGHT WITH POST DETAIL</i>
<i>Sheet No. 13/13</i>	– <i>SIGNAGE DETAILS</i>

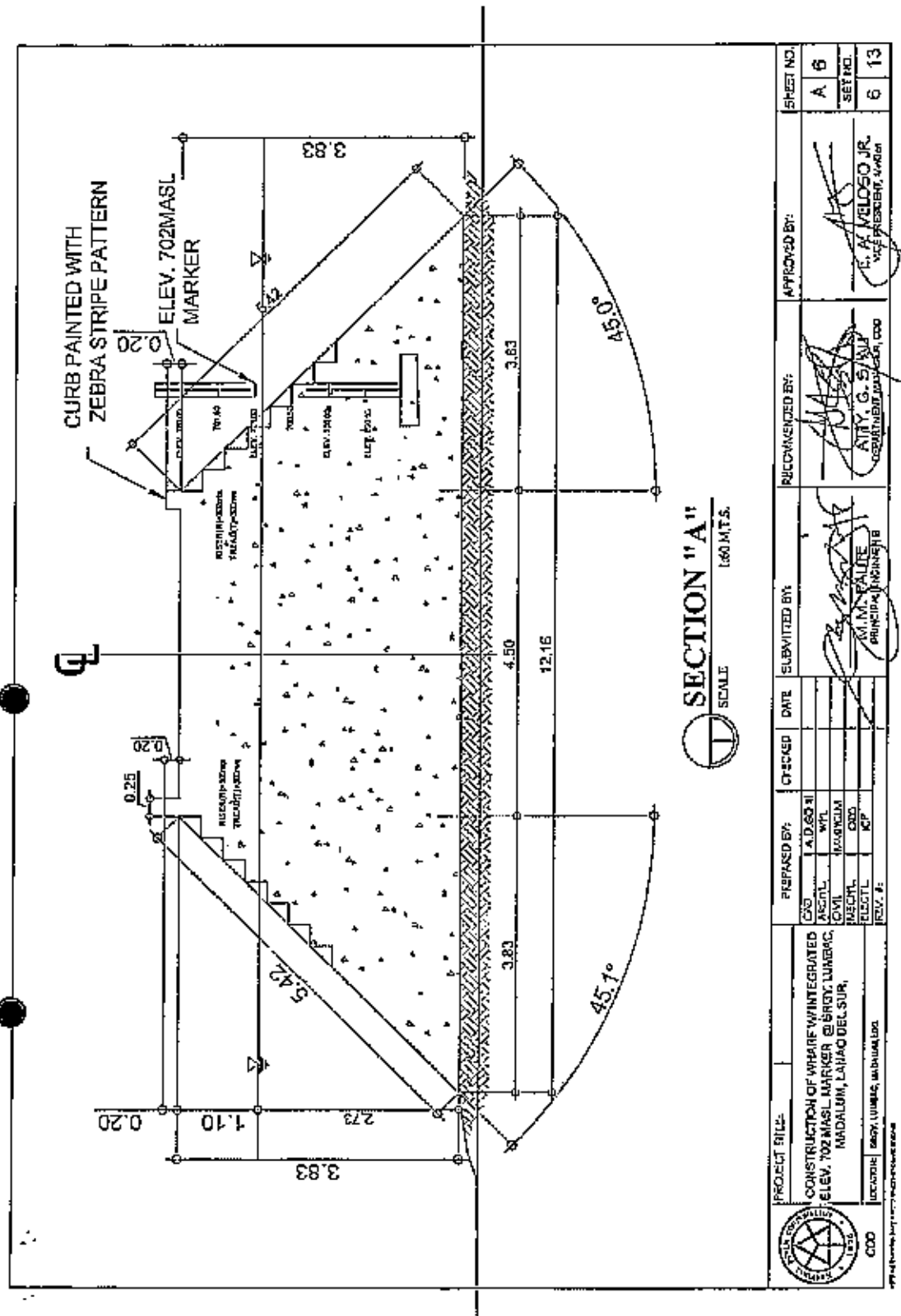


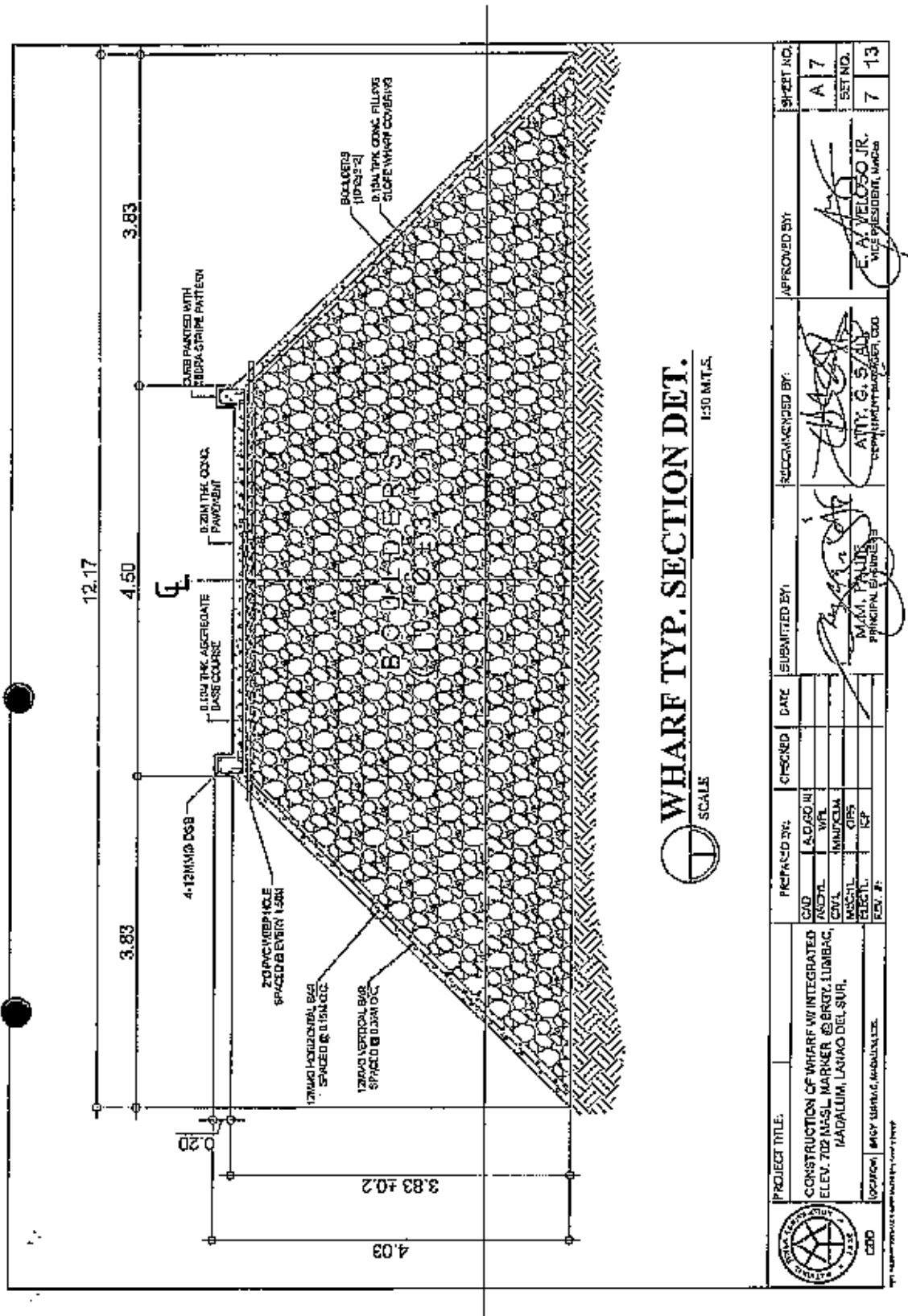


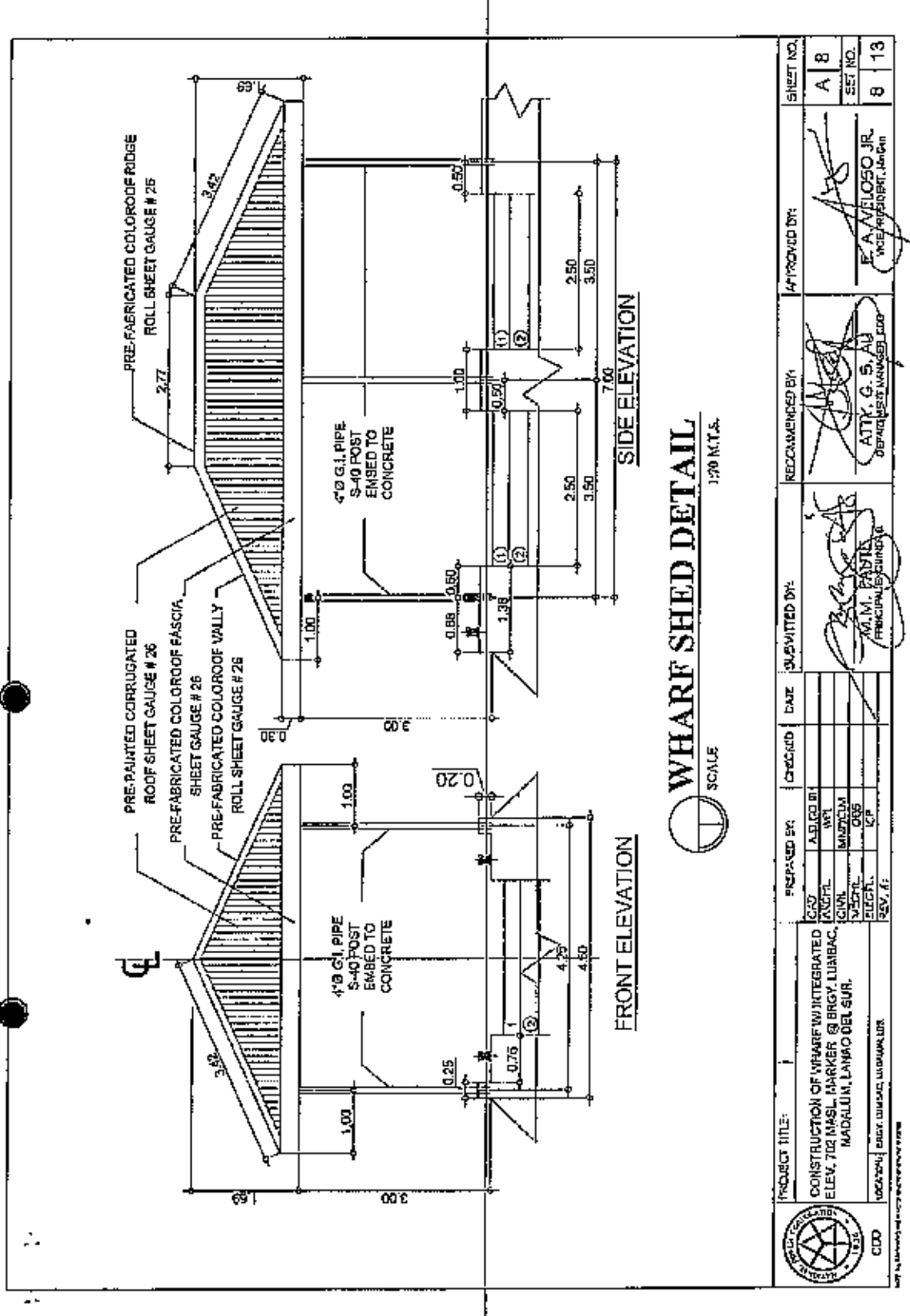


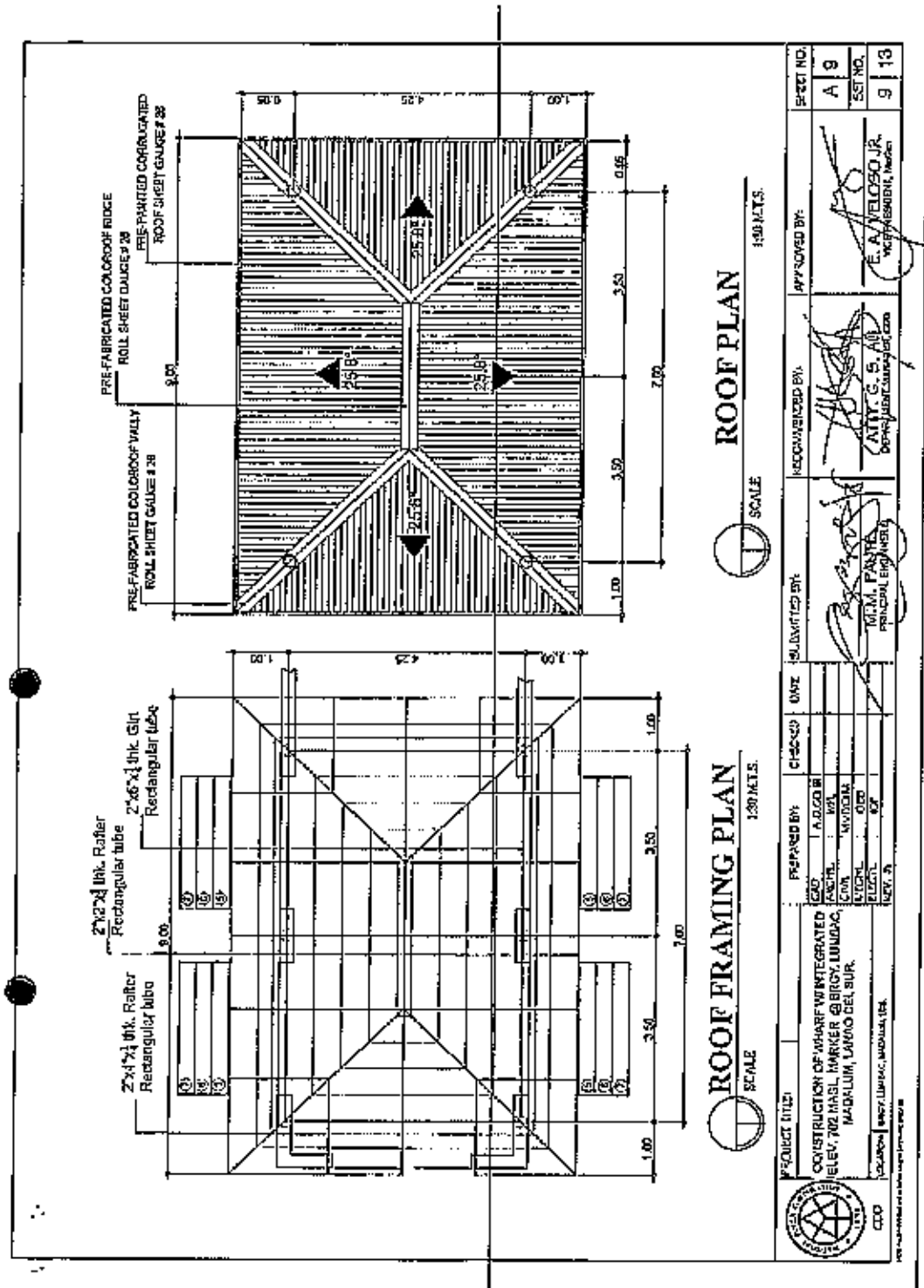




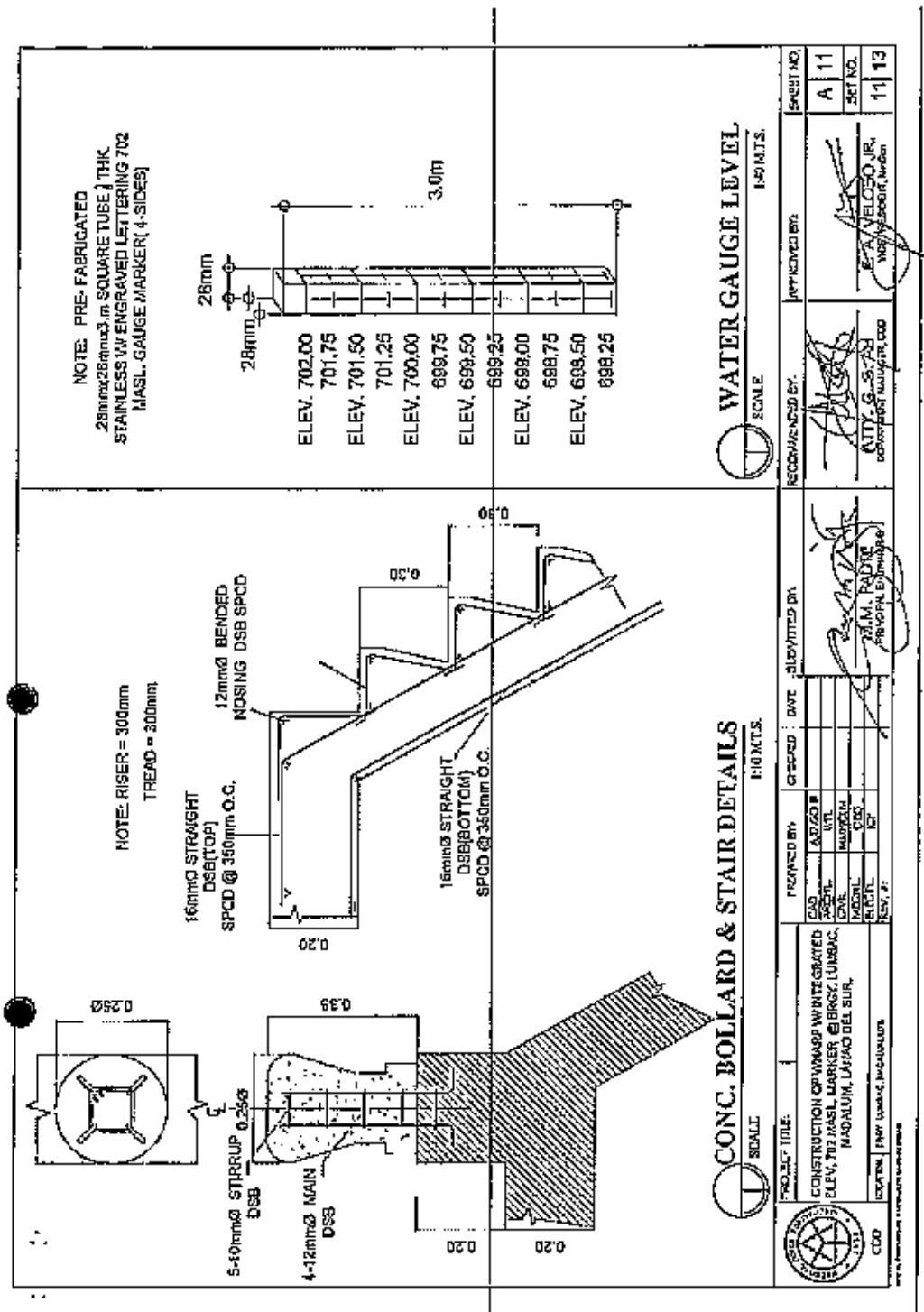








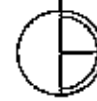









SOLAR LIGHT W/ POST DETAIL

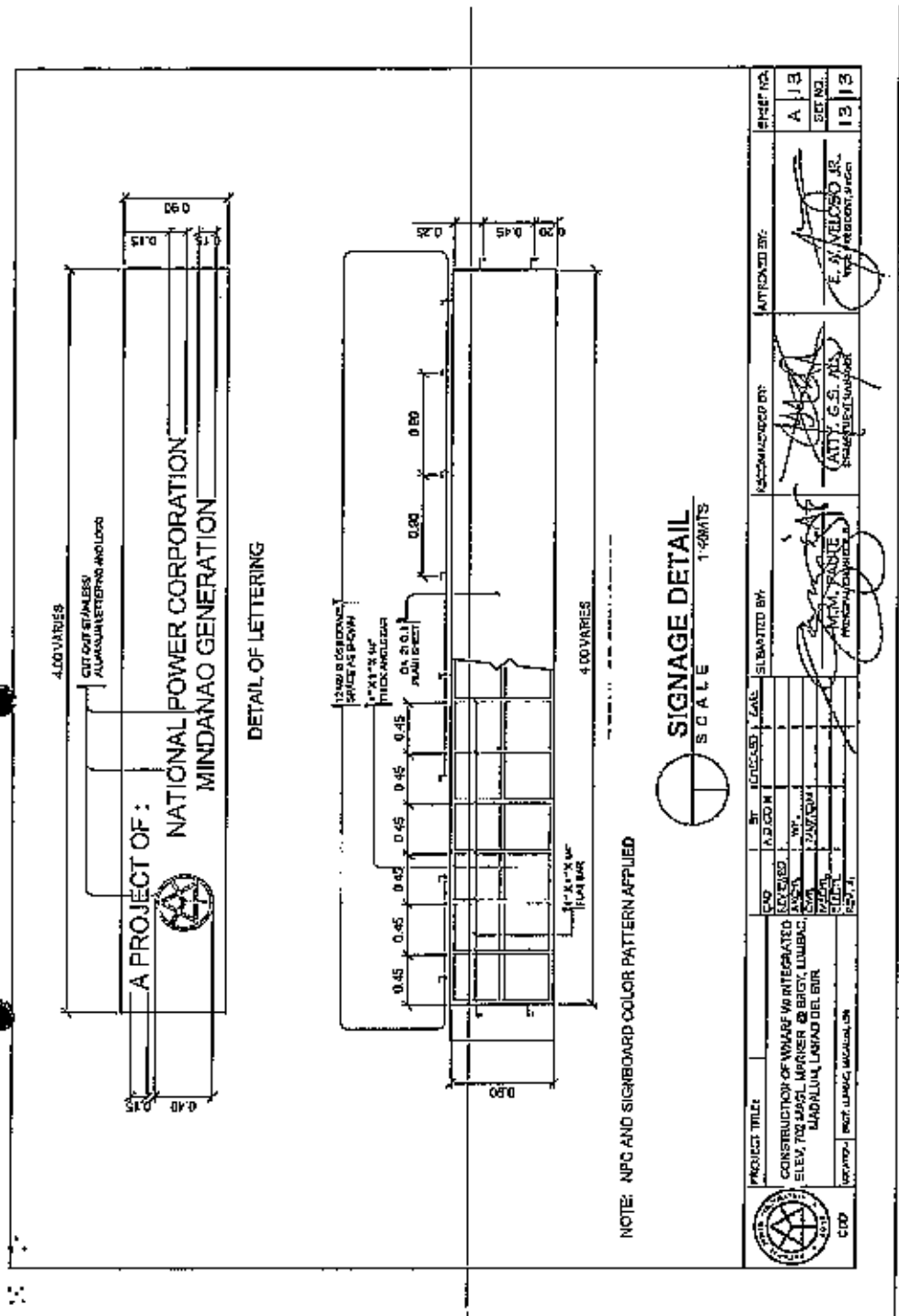
LEADS



FOOTING & MARKER COLUMN DETAILS

STACS

PROJECT TITLE	PREPARED BY:	CHECKED	DATE	SUBMITTED BY:	RECOMMENDED BY:	APPROVED BY:	SHEET NO.
CONSTRUCTION OF WHARF W/ INTEGRATED ELEV, 702 MASL, MARKER @ BRGY. LUMBAC, MADALUM, LANAO DEL SUR.	CAD	KCB		 M.M. PANTE PRINCIPAL ENGINEER	 ATTY. G. S. AL DEPARTMENT-HANDIG, CDO	 E. A. VELOSO JR. VICE-PRESIDENT, MASON	A 12
	ASCHL.	WPL					
	CIVIL	MMFCLM					
	MCCIL	OBS					
	ELECTL.	ICP					
LOCATION: BRGY. LUMBAC, MADALUM, LUS	REV. #1						12 13



Section VIII. Bill of Quantities

MINDEN - REGIONAL CONTRACTS COMMITTEE		PROJECT TITLE: CONSTRUCTION OF WHARF WITH INTEGRATED ELEV. 702 MASL MARKER	
REGIONAL POWER CORPORATION		BRGY., LUMBAC, MADALUM, LANAOD DEL SUR	
MRC, ILIGAN CITY		PR. #	
PART V - BIDDING FORM			
BILL OF QUANTITIES			
ITEM NO.	DESCRIPTION	UNIT	ESTIMATED QUANTITY
I.	CLEARING AND SITE PREPARATION	Sq. m.	340.00
II.	EARTHWORKS		
	Excavating / Backfilling (Boulder)	cum.	405.00
III.	CONCRETE WORKS		
IV.	REINFORCEMENT STEEL BARS/DSH WORKS	cum.	57.00
V.	ROOFING, TRUSSES AND LIGHTING WORKS	Sq. m.	4,705.00
VI.	PROJECT LANDMARK ELEV. 702 MASL GAUGE MARKER AND SIGNAGE WITH STAINLESS LETTERING WORKS	lot	1.00
		lot	1.00

NAME IN PRINT AND SIGNATURE OF BIDDER

DESIGNATION

NAME OF FIRMA

Section IX. Checklist of Technical and Financial Documents

Checklist of Technical and Financial Documents

- I. TECHNICAL COMPONENT ENVELOPE/*Submit in three (3) copies- one (1) marked Original with the understanding that the Pass/Fail evaluation will be based only on the copy marked "Original"*

Class "A" Documents

Legal Documents

- ☒ (a) Valid and updated PhilGEPS Registration Certificate (Platinum Membership) (all pages) *in accordance with Section 8.5.2 of the IRR; or*

Technical Documents

- ☒ (b) Statement of the prospective bidder of all its ongoing government and private contracts, including contracts awarded but not yet started, if any, whether similar or not similar in nature and complexity to the contract to be bid, *using NPC-MinGen Standard Form No. NPCMGNSF-INFR-01; and*
- ☒ (c) Statement of the bidder's Single Largest Completed Contract (SLCC) similar to the contract to be bid, except under conditions provided under the rules, *using NPC-MinGen Standard Form No. NPCMGNSF-INFR-02 supported with the following documents:*
- *Contract and/or Notice to Proceed;*
 - *For project completed within the year, submit Certificate of Completion;*
 - *For project completed after the lapse of one year, submit Owner's Certificate of Final Acceptance issued by the project owner other than the contractor, or a final rating of at least Satisfactory in the Constructor's Performance Evaluation System (CPES);*
 - *In case of contracts with the private sector, an equivalent document (Ex. Official receipt) shall be submitted.*
- and*
- ☒ (d) Special PCAB License in case of Joint Ventures; *and* registration for the type and cost of the contract to be bid; *and*
- ☒ (e) Original copy of Bid Security. If in the form of a Surety Bond, *using NPC-MinGen Standard Form No. NPCMGNSF-INFR-03a*, submit also a certification issued by the Insurance Commission; *or* Original copy of Notarized Bid Securing Declaration using *NPC-MinGen Standard Form No. NPCMGNSF-INFR-03b*; and
- ☒ (f) Project Requirements, which shall include the following:
- a. Organizational chart for the contract to be bid *using NPC-MinGen Standard Form No. NPCMGNSF-INFR-04;*

SECTION IX- CHECKLIST OF TECHNICAL &
FINANCIAL DOCUMENTS

PR NO./REF. NO : MG-COM22-011/INFR2022-CDD-029

- ☒ b. List of contractor's key personnel (e.g., Project Manager, Project Engineers, Materials Engineers, and Foremen), to be assigned to the contract to be bid, with their complete qualification and experience data, using NPC-MinGen Standard Form No. NPCMGNSF-INFR-05, 6a, 6b & 07;
- ☒ c. List of contractor's major equipment units, which are owned, leased, and/or under purchase agreements, supported by proof of ownership or certification of availability of equipment from the equipment lessor/vendor for the duration of the project, as the case may be, using NPC-MinGen Standard Form No. NPCMGNSF-INFR-08 and its supporting documents; and
- ☒ (g) Original duly signed Omnibus Sworn Statement (OSS), using any of the following NPC-MinGen Standard Forms No.:
NPCMGNSF-INFR-09a – for Sole Proprietorship;
or
NPCMGNSF-INFR-09b – for Partnership/Cooperative/Corporation/
Joint Venture with the following supporting documents:
- and if applicable, Original Notarized Secretary's Certificate in case of a corporation, partnership, or cooperative; or Original Special Power of Attorney of all members of the joint venture giving full power and authority to its officer to sign the OSS and do acts to represent the Bidder.

Financial Documents

- ☒ (h) The prospective bidder's computation of Net Financial Contracting Capacity (NFCC) using NPC-MinGen Standard Form No. NPCMGNSF-INFR-10.

Class "B" Documents

- ☒ (i) If applicable, duly signed joint venture agreement (JVA) in accordance with RA No. 4566 and its IRR in case the joint venture is already in existence, using NPC-MinGen Standard Form No. NPCMGNSF-INFR-11;
or
 duly notarized statements from all the potential joint venture partners stating that they will enter into and abide by the provisions of the JVA in the instance that the bid is successful.

II. FINANCIAL COMPONENT ENVELOPE/Submit in three (3) copies- one (1) marked Original with the understanding that the Pass/Fail evaluation will be based only on the copy marked "Original"]

- ☒ (j) Original of duly signed (each and every page) and accomplished Financial Bid Form, using NPC-MinGen Standard Form No. NPCMGNSF-INFR-12;
and

Other documentary requirements under RA No. 9184

- ☒ (k) Original of duly signed (each and every page) Bid Prices in the Bill of Quantities, using given form in Section VIII; and

SECTION IX- CHECKLIST OF TECHNICAL &
FINANCIAL DOCUMENTS

PR NO./REF. NO.: MG-COM22-011/INFR2022-GDD-029

- ☒ (l) Duly signed (each and every page) and accomplished Detailed Estimates Form using *NPC-MinGen Standard Form No. NPCMGNSF-INFR-13*, including a summary sheet indicating the unit prices of construction materials, labor rates, and equipment rentals used in coming up with the Bid using NPC form *NPCMGNSF-INFR-14*; and
- ☒ (m) Cash Flow by Quarter or Month, as applicable (duly signed each and every page)

STANDARD BIDDING FORMS
NPC-MINDANAO GENERATION

- NPCMGNSF-INFR-01 - List of all Ongoing Government & Private Construction Contracts Including Contracts Awarded but not yet Started
- NPCMGNSF-INFR-02 - Statement of the Bidder's Single Largest Completed Contract (SLCC) similar to the contract to be bid
- NPCMGNSF-INFR-03a - Form of Bid Security : Surety Bond
- NPCMGNSF-INFR-03b - Bid Securing Declaration Form
- NPCMGNSF-INFR-04 - Contractor's Organizational Chart for the Project
- NPCMGNSF-INFR-05 - List of Key Personnel Proposed to be Assigned to the Project
- NPCMGNSF-INFR-6a - Key Personnel's Certificate of Employment (Professional Personnel)
- NPCMGNSF-INFR-6b - Key Personnel's Certificate of Employment (Construction Safety and Health Practitioner)
- NPCMGNSF-INFR-07 - Key Personnel's Bio-Data
- NPCMGNSF-INFR-08 - List of Equipment, Owned or Leased and/or under Purchase Agreement, Pledged to the Proposed Project
- NPCMGNSF-INFR-09a - Omnibus Sworn Statement (Sole Proprietorship)
- NPCMGNSF-INFR-09b - Omnibus Sworn Statement (Partnership/ Cooperative/Corporation//Joint Venture)
- NPCMGNSF-INFR-10 - Computation of Net Financial Contracting Capacity (NFCC)
- NPCMGNSF-INFR-11 - Joint Venture Agreement
- NPCMGNSF-INFR-12 - Bid Form
- NPCMGNSF-INFR-13 - Detailed Cost Estimate Form
- NPCMGNSF-INFR-14 - Summary Sheets of Materials Prices, Labor Rates and Equipment Rental Rates

BID DOCUMENTS

NAME OF PROJECT: Construction Of Wharf With Integrated 702 Mast
Elevation Marker At Brgy. Lumbac, Matukun,
Lanao Del Sur

**SECTION IX- CHECKLIST OF TECHNICAL &
FINANCIAL DOCUMENTS**

PR NO/REF. NO : MG-COM22-011/INFR2022-CDD-028

Standard Form Number : NPCMGNSE-INFR-01

List of All Ongoing Government and Private Construction Contracts Including

Business Name : _____
Business Address : _____

Name of Contract/Location/ Project Cost	a. Owner's Name b. Address c. Telephone Nos.	Nature of Work	Contractor's Role	
			Description	%
Government				
Private				

The bidder shall declare in this form all his on-going government and private contracts including contracts where the bidder is a partner. Non declaration will be a ground for disqualification of bid.

Note: This statement shall be supported with Contract and/or Notice of Award (to be presented by the winning bidder)

Submitted by : _____
(Printed Name & Signature)
Designation : _____
Date : _____

BID DOCUMENTS

NAME OF PROJECT: Construction Of Wharf With Integrated 702 Mast
Elevation Marker At Brgy Lumbao, Madalum,
Lanao Del Sur

SECTION IX- CHECKLIST OF TECHNICAL &
FINANCIAL DOCUMENTS

PR NO./REF. NO : MG-CON22-011/INFR2022-CDD-029

Standard Form Number : NPCMGNSE-INFR-02

The Statement of the Bidder's Single Largest Completed Contract (SLCC)

Business Name : _____
Business Address : _____

Name of Contract	a. Owner's Name b. Address c. Telephone Nos.	Nature of Work	Contractor's Role	
			Description	%

Note: The bidder must state only one (1) Single Largest Completed Contract (SLCC) similar to the contract to b
shall be supported with:

1. Contract and Notice to Proceed
2. Certificate of Completion (for project completed within the year), or Owner's Certificate of Final Acceptance (for project owner other than the contractor, or a final rating of at least Satisfactory in the Contractor's private sector, an equivalent document (Ex. Official Receipt) shall be accepted.

Submitted by : _____
(Printed Name & Signature)

Designation : _____
Date : _____

FORM OF BID SECURITY (SURETY BOND)

BOND NO.: _____ DATE BOND EXECUTED: _____

By this bond, We (Name of Bidder) (hereinafter called "the Principal") and (Name of Surety) of (Name of Country of Surety), authorized to transact business in the Philippines (hereinafter called "the Employer") as Obligees, in the sum of [amount in words & figures as prescribed in the bidding documents], callable on demand, for the payment of which sum, well and truly to be made, we, the said Principal and Surety bind ourselves, our successors and assigns, jointly and severally, firmly by these presents.

SEALED with our seals and dated this _____ day of _____ 20____

WHEREAS, the Principal has submitted a written Bid to the Employer dated the _____ day of _____ 20____, for the _____ (hereinafter called "the Bid").

NOW THEREFORE, the conditions of this obligation are:

- 1) If the Bidder withdraws his Bid during the period of bid validity specified in the Bidding Documents; or
- 2) If the Bidder does not accept the correction of arithmetical errors of his bid price in accordance with the Instructions to Bidder; or
- 3) If the Bidder, having determined as the LCB, fails or refuses to submit the required tax clearance, latest income and business tax returns and PhilGEPS registration certificate within the prescribed period; or
- 4) If the bidder having been notified of the acceptance of his bid and award of contract to him by the Entity during the period of bid validity:
 - a) Fails or refuses to execute the Contract; or
 - b) Fails or refuses to submit the required valid JVA, if applicable; or
 - c) Fails or refuses to furnish the Performance Security in accordance with the Instruction to Bidders;

Then this obligation shall remain in full force and effect, otherwise it shall be null and void,

PROVIDED HOWEVER, that the Surety shall not be:

- a) Liable for a grater sum than the specified penalty of this bond, nor
- b) Liable for a greater sum than the difference between the amount of the said Principal's Bid and the amount of the Bid that is accepted by the Employer.

BID DOCUMENTS

NAME OF PROJECT: Construction Of Wharf With Integrated 702 Mast
Elevation Marker At Brgy. Lumbac, Madalum,
Lanao Del Sur

SECTION IX- CHECKLIST OF TECHNICAL &
FINANCIAL DOCUMENTS

PR NO/REF. NO : MG-COM22-011/INFR2022-CDD-029

Standard Form No: NPCMGNSF-INFR-03a

Page 2 of 2

This Surety executing this instrument hereby agrees that its obligation shall be valid for 120 calendar days after the deadline for submission of Bids as such deadline is stated in the instructions to Bidders or as it may be extended by the Employer, notice of which extension(s) to the Surety is hereby waived.

PRINCIPAL

SURETY

SIGNATURE(S)

SIGNATURE(S)

NAME(S) AND TITLE (S)

NAME(S)

SEAL

SEAL

REPUBLIC OF THE PHILIPPINES)
CITY OF _____) S.S.

BID SECURING DECLARATION
Project Identification No.: *[Insert number]*

To: *[Insert name and address of the Procuring Entity]*

I/We, the undersigned, declare that:

1. I/We understand that, according to your conditions, bids must be supported by a Bid Security, which may be in the form of a Bid Securing Declaration.
2. I/We accept that: (a) I/we will be automatically disqualified from bidding for any procurement contract with any procuring entity for a period of two (2) years upon receipt of your Blacklisting Order; and, (b) I/we will pay the applicable fine provided under Section 6 of the Guidelines on the Use of Bid Securing Declaration, within fifteen (15) days from receipt of the written demand by the procuring entity for the commission of acts resulting to the enforcement of the bid securing declaration under Sections 23.1(b), 34.2, 40.1 and 69.1, except 69.1(f), of the IRR of RA No. 9184; without prejudice to other legal action the government may undertake.
3. I/We understand that this Bid Securing Declaration shall cease to be valid on the following circumstances:
 - a. Upon expiration of the bid validity period, or any extension thereof pursuant to your request;
 - b. I am/we are declared ineligible or post-disqualified upon receipt of your notice to such effect, and (i) I/we failed to timely file a request for reconsideration or (ii) I/we filed a waiver to avail of said right; and
 - c. I am/we are declared the bidder with the Lowest Calculated Responsive Bid, and I/we have furnished the performance security and signed the Contract.

IN WITNESS WHEREOF, I/We have hereunto set my/our hand/s this ____ day of *[month]* *[year]* at *[place of execution]*.

*[Insert NAME OF BIDDER OR ITS AUTHORIZED
REPRESENTATIVE]*

[Insert signatory's legal capacity]

Affiant

[Jurati]

[Format shall be based on the latest Rules on Notarial Practice]

CONTRACTOR'S ORGANIZATIONAL CHART FOR THE CONTRACT

Submit Copy of the Organizational Chart that the Contractor intends to use to execute the Contract if awarded to him. Indicate in the chart the names of the Project Manager, Project Engineer, Foreman and other Key Engineering Personnel.

Attach the required Proposed Organizational Chart for the Contract as stated above

NOTES:

1. *This organization chart should represent the "Contractor's Organization" required for the Project, and not the organizational chart of the entire firm.*
2. *Each such nominated engineer/key personnel shall comply with and submit their complete qualification and experience data.*
3. *All these are required to be in the Technical Envelope of the Bidder.*

BID DOCUMENTS

NAME OF PROJECT: Construction Of Wharf With Integrated 702 Masl
Elevation Market At Brgy. Lumbac, Madalum,
Lanao Del Sur

**SECTION IX-CHECKLIST OF TECHNICAL &
FINANCIAL DOCUMENTS**

PR NO /REF. NO : MG-COM22-011/INFR2022-GDD-029

Standard Form Number : NPCMGNSE-INFR-05

**LIST OF KEY PERSONNEL PROPOSED TO BE ASSIGNED TO THE CONTRACT
(Based on the Minimum Key Personnel Required in the Bidding Documents)**

Business Name : _____

Business : _____

DESIGNATION			
1. Name			
2. Address			
3. Date of Birth			
4. Employed Since			
5. Experience			
6. Previous Employment			
7. Education			
8. PRC License			

Required Attachments during Postqualification:

1. Valid PRC License of the (professional personnel)
2. Certificate of Training with accreditation from DOLE of the Construction Safety and Health Officer
3. TESDA Training Certificate (NC II) of Welder or Electrician, whichever is applicable
4. Copy of Diploma and/or Service Record/Certificate of Employment of previous and/or current employer of Foreman, Welder, Plumber or Electrician, whichever is applicable
shall be submitted during post qualification by the winning bidder.

Submitted by: _____
(Printed name & Signature)

Designation: _____
Date: _____

One of the requirements from the bidder to be included in its Technical Envelope is a list of contractor's key personnel (based on the minimum key personnel required in the bidding documents) to be assigned to the contract to be bid, with their complete qualification and experience data (including the key personnel's signed written commitment to work for the project once awarded the contract).

KEY PERSONNEL'S CERTIFICATE OF EMPLOYMENT (PROFESSIONAL PERSONNEL)

Issuance Date

THE VICE PRESIDENT
National Power Corporation
Mindanao Generation
Maria Cristina, Iligan City

Dear Sir:

I am (Name of Nominee) a Licensed Engineer with
Professional License No. Issued on (date of issuance) at (place
of issuance)

I hereby certify that (Name of Bidder) Has engaged my services as
(Designation) for the (Name of Project), if awarded to it.

As (Designation), I supervised the following completed projects
Similar to the contract under bidding:

NAME OF PROJECT	OWNER	COST	DATE COMPLETED
_____	_____	_____	_____
_____	_____	_____	_____
_____	_____	_____	_____

At present, I am supervising the following projects:

NAME OF PROJECT	OWNER	COST	DATE COMPLETED
_____	_____	_____	_____
_____	_____	_____	_____
_____	_____	_____	_____

In case of my separation for any reason whatsoever from the above-mentioned Contractor, I shall notify the National Power Corporation at least twenty one (21) days before the effective date of separation.

As (Designation), I know I will have to stay in the job site
all the time to supervise and manage the Contract works to the best of my ability, and
aware that I am authorized to handle only one (1) contract at a time.

One of the requirements from the bidder to be included in its Technical Envelope is a list of contractor's key personnel (viz. Project Manager, Project Engineer, Safety & Health Practitioner, Foremen, etc.), to be assigned to the contract to be bid, with their complete qualification and experience data (including the key personnel's signed written commitment to work for the project once awarded the contract).

I do not allow the use of my name for the purpose of enabling the above-mentioned Contractor to qualify for the Contract without any firm commitment on my part to assume the post of (Designation) therefore, if the contract is awarded to him since I understand that to do so will be a sufficient ground for my disqualification as (Designation) In any future National Power Corporation bidding or employment with any Contractor doing business with the National Power Corporation.

(Name and Signature)
AFFIANT

REPUBLIC OF THE PHILIPPINES)
City/Municipality of _____)S.S.

SUBSCRIBED AND SWORN TO before me this _____, day of _____ 20____
affiant exhibiting to me his/her Community Tax Certificate No. _____ issued on
_____ at _____, Philippines.

Notary Public
Until 31 December 20 _____
PTR No. _____
Issued at: _____
Issued on: _____
TIN No. _____

Doc. No. _____
Page No. _____
Book No. _____
Series of _____

One of the requirements from the bidder to be included in its Technical Envelope is a list of contractor's key personnel (viz. Project Manager, Project Engineer, Safety & Health Practitioner, Foremen, etc.), to be assigned to the contract to be bld, with their complete qualification and experience data (including the key personnel's signed written commitment to work for the project once awarded the contract).

**KEY PERSONNEL'S CERTIFICATE OF EMPLOYMENT
(CONSTRUCTION SAFETY AND HEALTH PRACTITIONER)**

Issuance Date

THE VICE PRESIDENT
National Power Corporation
Mindanao Generation
Maria Cristina, Iligan City

Dear Sir:

I am (Name of Nominee) a Licensed Engineer with
Professional License No. Issued on at (date of issuance)
(place of issuance)

I hereby certify that (Name of Bidder) Has engaged my services as
(Designation) for the (Name of Project), if awarded to it.

As (Designation), I supervised the following completed projects
Similar to the contract under bidding:

NAME OF PROJECT	OWNER	COST	DATE COMPLETED

At present, I am supervising the following projects:

NAME OF PROJECT	OWNER	COST	DATE COMPLETED

In case of my separation for any reason whatsoever from the above-mentioned Contractor, I shall notify the National Power Corporation at least twenty one (21) days before the effective date of separation.

As Safety and Health Practitioner, I know I will have to stay in the job site all the time and aware that I am authorized to handle only one (1) contract at a time.

One of the requirements from the bidder to be included in its Technical Envelope is a list of contractor's key personnel (viz. Project Manager, Project Engineer, Safety & Health Practitioner, Foreman, etc.), to be assigned to the contract to be bid, with their complete qualification and experience data (including the key personnel's signed written commitment to work for the project once awarded the contract).

I do not allow the use of my name for the purpose of enabling the above-mentioned Contractor to qualify for the Contract without any firm commitment on my part to assume the post of Safety and Health Practitioner, if the contract is awarded to him since I understand that to do so will be a sufficient ground for my disqualification as Safety and Health Practitioner in any future National Power Corporation bidding or employment with any Contractor doing business with the National Power Corporation.

(Name and Signature)
AFFIANT

REPUBLIC OF THE PHILIPPINES)
City/Municipality of _____)S.S.

SUBSCRIBED AND SWORN TO before me this _____, day of _____ 20____,
affiant exhibiting to me his/her Community Tax Certificate No. _____ issued on
_____ at _____, Philippines.

Notary Public
Until 31 December 20 _____
PTR No. _____
Issued at: _____
Issued on: _____
TIN No. _____

Doc. No. _____
Page No. _____
Book No. _____
Series of _____

One of the requirements from the bidder to be included in its Technical Envelope is a list of contractor's key personnel (viz. Project Manager, Project Engineer, Safety & Health Practitioner, Foremen, etc.), to be assigned to the contract to be bid, with their complete qualification and experience data (including the key personnel's signed written commitment to work for the project once awarded the contract).

KEY PERSONNEL (FORMAT OF BIO-DATA)

Give the detailed information of the following personnel who are scheduled to be assigned as full-time staff for the project. Fill up a form for each person.

1. Name : _____
2. Date of Birth : _____
3. Nationality : _____
4. Education and Degrees : _____
5. Specialty : _____
6. Registration : _____
7. Length of Service with the
Firm : _____ Year
from _____ (months) _____ (year)
To _____ (months) _____ (year)
8. Years of Experience _____
9. If item 7 is less than the required number of years stated in BDS Section III- ITB Clause 10.4, give name and length of service with previous employers to satisfy the required number of years of experience within the last ten (10) years (attached additional sheet/s), if necessary:

Name and Address of Employer

Length of Service

_____	_____	Year(s) from _____ to _____
_____	_____	Year(s) from _____ to _____
_____	_____	Year(s) from _____ to _____

10. Experience:

This should cover the past ten (10) years of experience. (Attached as many pages as necessary to show involvement of personnel in projects using the format below).

One of the requirements from the bidder to be included in its Technical Envelope is a list of contractor's key personnel (viz. Project Manager, Project Engineer, Safety & Health Practitioner, Foremen, etc.), to be assigned to the contract to be bid, with their complete qualification and experience data (including the key personnel's signed written commitment to work for the project once awarded the contract).

1. Name : _____
2. Name and Address of Owner : _____
3. Name and Address of the Owner's Engineer (Consultant) : _____
4. Indicate the Features of Project (particulars of the project components and any other particular interest connected with the project) : _____
5. Contract Amount Expressed in Philippine Currency : _____
6. Position : _____
7. Structures for which the employee was responsible : _____
8. Assignment Period : _____ from _____ (months) _____ (years)
to _____ (months) _____ (years)

Name and Signature of
Employee

It is hereby certified that the above personnel can be assigned to this project, if the contract is awarded to our company.

(Place and Date)

(The Authorized Representative)

One of the requirements from the bidder to be included in its Technical Envelope is a list of contractor's key personnel (viz. Project Manager, Project Engineer, Safety & Health Practitioner, Foremen, etc.), to be assigned to the contract to be bid, with their complete qualification and experience data (including the key personnel's signed written commitment to work for the project once awarded the contract).

BID DOCUMENTS

NAME OF PROJECT: Construction Of Wharf With Integrated 702 Mast
Elevation Marker At Brgy. Lumbac, Madalum,
Lanao Del Sur

PR NO./REF. NO.: MG-COM22-01/INFR2022-CDD-029

**SECTION IX- CHECKLIST OF TECHNICAL &
FINANCIAL DOCUMENTS**

Standard Form Number : NPCMGNSE-INFR - 08

LIST OF EQUIPMENT, OWNED OR LEASED AND/OR UNDER PL
(Based on the Minimum Equipment Required in the Bid

Business Name : _____
Business : _____

Description	Model/Year	Capacity/ Performance / Size	Plate No.	Motor No. / Body No.
A. Owned				
i.				
ii.				
iii.				
iv.				
B. Leased				
i.				
ii.				
iii.				
iv.				
C. Under Purchased Agreements				
i.				
ii.				
iii.				
iv.				

Submitted by: _____ **(Printed name & Signature)**
Designation: _____
Date: _____

One of the requirements from the bidder to be included in its Technical Envelope is the list of its equipment units pledged for the contract, which are owned (supported by proof/s of ownership), leased, and/or under purchase agreements (with corresponding engine numbers, availability of equipment from the equipment lessor/vendor for the duration of the project.

Omnibus Sworn Statement (Revised) (SOLE PROPRIETORSHIP)

REPUBLIC OF THE PHILIPPINES)
CITY/MUNICIPALITY OF _____) S.S.

AFFIDAVIT

I, [Name of Affiant], of legal age, [Civil Status], [Nationality], and residing at [Address of Affiant], after having been duly sworn in accordance with law, do hereby depose and state that:

1. I am the sole proprietor or authorized representative of [Name of Bidder] with office address at [address of Bidder];
2. As the owner and sole proprietor, or authorized representative of [Name of Bidder], I have full power and authority to do, execute and perform any and all acts necessary to participate, submit the bid, and to sign and execute the ensuing contract for [Name of the Project] of the National Power Corporation-Mindanao Generation, as shown in the attached duly notarized Special Power of Attorney;
3. [Name of Bidder] is not "blacklisted" or barred from bidding by the Government of the Philippines or any of its agencies, offices, corporations, or Local Government Units, foreign government/foreign or international financing institution whose blacklisting rules have been recognized by the Government Procurement Policy Board, by itself or by relation, membership, association, affiliation, or controlling interest with another blacklisted person or entity as defined and provided for in the Uniform Guidelines on Blacklisting;
4. Each of the documents submitted in satisfaction of the bidding requirements is an authentic copy of the original, complete, and all statements and information provided therein are true and correct;
5. [Name of Bidder] is authorizing the Head of the Procuring Entity or its duly authorized representative(s) to verify all the documents submitted;
6. The owner or sole proprietor is not related to the Head of the Procuring Entity, members of the Bids and Awards Committee (BAC), the Technical Working Group, and the BAC Secretariat, the head of the Project Management Office or the end-user unit, and the project consultants by consanguinity or affinity up to the third civil degree;
7. [Name of Bidder] complies with existing labor laws and standards; and
8. [Name of Bidder] is aware of and has undertaken the responsibilities as a Bidder in compliance with the Philippine Bidding Documents, which includes:
 - a. Carefully examining all of the Bidding Documents;
 - b. Acknowledging all conditions, local or otherwise, affecting the implementation of the Contract;

- c. Making an estimate of the facilities available and needed for the contract to be bid, if any; and
 - d. Inquiring or securing Supplemental/Bid Bulletin(s) issued for the *[Name of the Project]*.
9. *[Name of Bidder]* did not give or pay directly or indirectly, any commission, amount, fee, or any form of consideration, pecuniary or otherwise, to any person or official, personnel or representative of the government in relation to any procurement project or activity.
10. In case advance payment was made or given, failure to perform or deliver any of the obligations and undertakings in the contract shall be sufficient grounds to constitute criminal liability for Swindling (Estafa) or the commission of fraud with unfaithfulness or abuse of confidence through misappropriating or converting any payment received by a person or entity under an obligation involving the duty to deliver certain goods or services, to the prejudice of the public and the government of the Philippines pursuant to Article 315 of Act No. 3815 s. 1930, as amended, or the Revised Penal Code.

IN WITNESS WHEREOF, I have hereunto set my hand this ___ day of ___, 20__ at _____, Philippines.

[Insert NAME OF BIDDER OR ITS AUTHORIZED REPRESENTATIVE]
[Insert signatory's legal capacity]
Affiant

[Jurat]
[Format shall be based on the latest Rules on Notarial Practice]

Standard Form No: NPCMGNSF-INFR-09b

Omnibus Sworn Statement (Revised)
PARTNERSHIP/COOP/CORP/JOINT VENTUREREPUBLIC OF THE PHILIPPINES)
CITY/MUNICIPALITY OF _____) S.S.**AFFIDAVIT**I, [Name of Affiant], of legal age, [Civil Status], [Nationality], and residing at [Address of Affiant], after having been duly sworn in accordance with law, do hereby depose and state that:

1. I am the duly authorized and designated representative of [Name of Bidder] with office address at [address of Bidder];
2. I am granted full power and authority to do, execute and perform any and all acts necessary to participate, submit the bid, and to sign and execute the ensuing contract for [Name of the Project] of the National Power Corporation-Mindanao Generation, as shown in the attached [state title of attached document showing proof of authorization (e.g., duly notarized Secretary's Certificate, Board/Partnership Resolution, or Special Power of Attorney, whichever is applicable);];
3. [Name of Bidder] is not "blacklisted" or barred from bidding by the Government of the Philippines or any of its agencies, offices, corporations, or Local Government Units, foreign government/foreign or international financing institution whose blacklisting rules have been recognized by the Government Procurement Policy Board, by itself or by relation, membership, association, affiliation, or controlling interest with another blacklisted person or entity as defined and provided for in the Uniform Guidelines on Blacklisting;
4. Each of the documents submitted in satisfaction of the bidding requirements is an authentic copy of the original, complete, and all statements and information provided therein are true and correct;
5. [Name of Bidder] is authorizing the Head of the Procuring Entity or its duly authorized representative(s) to verify all the documents submitted;
6. *[If a partnership or cooperative:]* None of the officers and members of [Name of Bidder] is related to the Head of the Procuring Entity, members of the Bids and Awards Committee (BAC), the Technical Working Group, and the BAC Secretariat, the head of the Project Management Office or the end-user unit, and the project consultants by consanguinity or affinity up to the third civil degree;

[If a corporation or joint venture:] None of the officers, directors, and controlling stockholders of [Name of Bidder] is related to the Head of the Procuring Entity, members of the Bids and Awards Committee (BAC), the Technical Working Group, and the BAC Secretariat, the head of the Project Management Office or the end-user unit, and the project consultants by consanguinity or affinity up to the third civil degree;

7. [Name of Bidder] complies with existing labor laws and standards; and
8. [Name of Bidder] is aware of and has undertaken the responsibilities as a Bidder in compliance with the Philippine Bidding Documents, which includes:
- Carefully examining all of the Bidding Documents;
 - Acknowledging all conditions, local or otherwise, affecting the implementation of the Contract;
 - Making an estimate of the facilities available and needed for the contract to be bid, if any; and
 - Inquiring or securing Supplemental/Bid Bulletin(s) issued for the [Name of the Project].
9. [Name of Bidder] did not give or pay directly or indirectly, any commission, amount, fee, or any form of consideration, pecuniary or otherwise, to any person or official, personnel or representative of the government in relation to any procurement project or activity.
10. In case advance payment was made or given, failure to perform or deliver any of the obligations and undertakings in the contract shall be sufficient grounds to constitute criminal liability for Swindling (Estafa) or the commission of fraud with unfaithfulness or abuse of confidence through misappropriating or converting any payment received by a person or entity under an obligation involving the duty to deliver certain goods or services, to the prejudice of the public and the government of the Philippines pursuant to Article 315 of Act No. 3815 s. 1930, as amended, or the Revised Penal Code.

IN WITNESS WHEREOF, I have hereunto set my hand this ___ day of ___, 20___ at _____, Philippines.

[Insert NAME OF BIDDER OR ITS AUTHORIZED REPRESENTATIVE]

[Insert signatory's legal capacity]
Affiant

[Jurat]

[Format shall be based on the latest Rules on Notarial Practice]

NET FINANCIAL CONTRACTING CAPACITY (NFCC)

- A. Summary of the Bidder's/Contractor's assets and liabilities on the basis of the income tax return and audited financial statement for the immediately preceding calendar year are:

		Year 20
1.	Total Assets	
2.	Current Assets	
3.	Total Liabilities	
4.	Current Liabilities	
5.	Net Worth (1-3)	
6.	Net Working Capital (2-4)	

- B. The Net Financial Contracting Capacity (NFCC) based on the above data is computed as follows:

NFCC = [(Current assets minus current liabilities) x 15] minus the value of all outstanding or uncompleted portions of the projects under ongoing contracts, including awarded contracts yet to be started coinciding with the contract for this Project.

NFCC = P _____

Herewith attached is certified true copy of the audited financial statement, stamped "RECEIVED" by the BIR or BIR authorized collecting agent for the immediately preceding calendar year,

Submitted by:

Name of Bidder/Contractor

Signature of Authorized Representative

Date: _____

JOINT VENTURE AGREEMENT**KNOW ALL MEN BY THESE PRESENTS:**

That this JOINT VENTURE AGREEMENT is entered in to by and between:
_____ of legal age, (civil status), authorized representative of
_____ and a resident of _____.

- and -

_____ of legal age, (civil status), authorized representative of
_____ and a resident of _____.

That both parties agree to join together their capital, manpower, equipment, and other resources and efforts to enable the Joint Venture to participate in the Bidding and Undertaking of the hereunder stated Contract of the National Power Corporation.

NAME OF FIRM**CAPITAL CONTRIBUTION**

That the capital contribution of each member firm:

NAME OF FIRM**CAPITAL CONTRIBUTION**

1

DHD

2

DHD

That both parties agree to be jointly and severally liable for their participation in the Bidding and Undertaking of the said contract.

That both parties agree that _____ and/or _____ shall be the Official Representative/s of the Joint Venture, and are granted full power and authority to do, execute and perform any and all acts necessary and/or to represent the Joint Venture in the Bidding and Undertaking of the said contract, as fully and effectively and the Joint Venture may do and if personally present with full power of substitution and revocation.

That this Joint Venture Agreement shall remain in effect only for the above stated Contract until terminated by both parties.

Name & Signature of Authorized
Representative

Official Designation

Name of Firm

Name & Signature of
Authorized Representative

Official Designation

Name of Firm

Witnesses

If the bidder is a joint venture, one of the requirements is the submission of a valid joint venture agreement.

ACKNOWLEDGEMENT

BEFORE ME, a Notary Public for and in _____, Philippines, this _____ day of _____, 20____, personally appeared _____, authorized representative, of _____ with Community Tax Certificate No. _____, issued at _____, on _____, AND _____ authorized representative, of _____ with Community Tax Certificate No. _____, issued at _____, on _____ known to me to be the same person who executed the foregoing instrument consisting of two (2) pages, including the page whereon the acknowledgements are written, all pages signed by both parties and their instrumental witnesses and they acknowledged before me that the same are their free and voluntary acts and deeds and that of the Corporations they represents.

WITNESS MY HAND AND NOTARIAL SEAL, at the place and on the date first above written.

Notary Public

Until 31 December 20 _____

PTR No. _____

Issued at: _____

Issued on: _____

TIN No. _____

Doc. No. _____

Page No. _____

Book No. _____

Series of _____

If the bidder is a joint venture, one of the requirements is the submission of a valid joint venture agreement.

Bid Form for the Procurement of Infrastructure Projects**BID FORM**

Date : _____

Project Identification No. : _____

To: **The Vice President**
National Power Corporation
Mindanao Generation
Maria Cristina, Iligan City

Having examined the Philippine Bidding Documents (PBDs) including the Supplemental or Bid Bulletin Numbers [insert numbers], the receipt of which is hereby duly acknowledged, we, the undersigned, declare that:

- a. We have no reservation to the PBDs, including the Supplemental or Bid Bulletins, for the Procurement Project: [insert name of contract];
- b. We offer to execute the Works for this Contract in accordance with the PBDs;
- c. The total price of our Bid in words and figures, excluding any discounts offered below is: [insert information];
- d. The discounts offered and the methodology for their application are: [insert information];
- e. The total bid price includes the cost of all taxes, such as, but not limited to: [specify the applicable taxes, e.g. (i) value added tax (VAT), (ii) income tax, (iii) local taxes, and (iv) other fiscal levies and duties], which are itemized herein and reflected in the detailed estimates,
- f. Our Bid shall be valid within the a period stated in the PBDs, and it shall remain binding upon us at any time before the expiration of that period;
- g. If our Bid is accepted, we commit to obtain a Performance Security in the amount of [insert percentage amount] percent of the Contract Price for the due performance of the Contract, or a Performance Securing Declaration in lieu of the the allowable forms of Performance Security, subject to the terms and conditions of issued GPPB guidelines¹ for this purpose;
- h. We are not participating, as Bidders, in more than one Bid in this bidding process, other than alternative offers in accordance with the Bidding Documents;
- i. We understand that this Bid, together with your written acceptance thereof included in your notification of award, shall constitute a binding contract between us, until a formal Contract is prepared and executed; and

¹ currently based on GPPB Resolution No. 09-2020

BID DOCUMENTS

NAME OF PROJECT: Construction Of Wharf With Integrated 702 Masl
Elevation Marker At Brgy. Lumbac, Madalum,
Lanao Del Sur

SECTION IX- CHECKLIST OF TECHNICAL &
FINANCIAL DOCUMENTS

PR NO./REF. NO. MG-COM22-011/INFR2022-ODD-029

Standard Form No: NPCMGNSF-INFR-12

Page 2 of 2

- j. We understand that you are not bound to accept the Lowest Calculated Bid or any other Bid that you may receive.
- k. We likewise certify/confirm that the undersigned, is the duly authorized representative of the bidder, and granted full power and authority to do, execute and perform any and all acts necessary to participate, submit the bid, and to sign and execute the ensuing contract for the [Name of Project] of the National Power Corporation-Mindanao Generation.
- l. We acknowledge that failure to sign each and every page of this Bid Form, including the Bill of Quantities, shall be a ground for the rejection of our bid.

Name: _____

Legal Capacity: _____

Signature: _____

Duly authorized to sign the Bid for and behalf of: _____

Date: _____

NAME OF PROJECT: Construction Of Wharf With Integrated 702 Mast
Elevation Marker At Brgy. Lumbac, Madalum,
Lantao Del Sur

PR NO/REF. NO : MG-COM22-011/INFR2022-CDD-029

DETAILED COST ESTIMATE FORM

Name of bidder :

[illegible]

Name, Signature of Authorized Representative

*Standard Form No: NPCMGNSF-INFR-14***SUMMARY SHEETS OF MATERIALS PRICES, LABOR RATES AND
EQUIPMENT RENTAL RATES**Name of Bidder: _____
_____**I. Unit Prices of Materials**

Materials Description	Unit	Unit Price
-----------------------	------	------------

II. Manpower Hourly Rates

Designation	Rate/Hr.
-------------	----------

III. Equipment Hourly Rental Rates

Equipment Description	Rental Rate/Hr.
-----------------------	-----------------

Name, Signature of Authorized Representative_____
Designation

Performance Securing Declaration (Revised)

[if used as an alternative performance security but it is not required to be submitted with the Bid, as it shall be submitted within ten (10) days after receiving the Notice of Award]

REPUBLIC OF THE PHILIPPINES)
CITY OF _____) S.S.

PERFORMANCE SECURING DECLARATION

Invitation to Bid: [Insert Reference Number indicated in the Bidding Documents]

To: [Insert name and address of the Procuring Entity]

I/We, the undersigned, declare that:

1. I/We understand that, according to your conditions, to guarantee the faithful performance by the supplier/distributor/manufacturer/contractor/consultant of its obligations under the Contract, I/we shall submit a Performance Securing Declaration within a maximum period of ten (10) calendar days from the receipt of the Notice of Award prior to the signing of the Contract.
2. I/We accept that: I/we will be automatically disqualified from bidding for any procurement contract with any procuring entity for a period of one (1) year for the first offense, or two (2) years for the second offense, upon receipt of your Blacklisting Order if I/We have violated my/our obligations under the Contract;
3. I/We understand that this Performance Securing Declaration shall cease to be valid upon:
 - a. issuance by the Procuring Entity of the Certificate of Final Acceptance, subject to the following conditions:
 - i. Procuring Entity has no claims filed against the contract awardee;
 - ii. It has no claims for labor and materials filed against the contractor; and
 - iii. Other terms of the contract; or
 - b. replacement by the winning bidder of the submitted PSD with a performance security in any of the prescribed forms under Section 39.2 of the 2016 revised IRR of RA No. 9184 as required by the end-user.

IN WITNESS WHEREOF, I/We have hereunto set my/our hand/s this ____ day of [month] [year] at [place of execution].

*[Insert NAME OF BIDDER OR ITS
AUTHORIZED REPRESENTATIVE]*

[Insert signatory's legal capacity]

Affiant

[Jurat]

[Format shall be based on the latest Rules on Notarial Practice]

Contract Agreement Form for the Procurement of Infrastructure Projects (Revised)

*[not required to be submitted with the Bid, but it shall be submitted within ten (10) days after
receiving the Notice of Award]*

CONTRACT AGREEMENT

THIS AGREEMENT, made this *[insert date]* day of *[insert month]*, *[insert year]* between *[name and address of PROCURING ENTITY]* (hereinafter called the "Entity") and *[name and address of Contractor]* (hereinafter called the "Contractor").

WHEREAS, the Entity is desirous that the Contractor execute *[name and identification number of contract]* (hereinafter called "the Works") and the Entity has accepted the Bid for *[contract price in words and figures in specified currency]* by the Contractor for the execution and completion of such Works and the remedying of any defects therein.

NOW THIS AGREEMENT WITNESSETH AS FOLLOWS:

1. In this Agreement, words and expressions shall have the same meanings as are respectively assigned to them in the Conditions of Contract hereinafter referred to.
2. The following documents as required by the 2016 revised Implementing Rules and Regulations of Republic Act No. 9184 shall be deemed to form and be read and construed as part of this Agreement, viz.:
 - a. Philippine Bidding Documents (PBDs);
 - i. Drawings/Plans;
 - ii. Specifications;
 - iii. Bill of Quantities;
 - iv. General and Special Conditions of Contract;
 - v. Supplemental or Bid Bulletins, if any;
 - b. Winning bidder's bid, including the Eligibility requirements, Technical and Financial Proposals, and all other documents or statements submitted;

Bid form, including all the documents/statements contained in the Bidder's bidding envelopes, as annexes, and all other documents submitted (e.g., Bidder's response to request for clarifications on the bid), including corrections to the bid, if any, resulting from the Procuring Entity's bid evaluation;

- c. Performance Security;
- d. Notice of Award of Contract and the Bidder's conforme thereto; and
- e. Other contract documents that may be required by existing laws and/or the Procuring Entity concerned in the PBDs. Winning bidder agrees that additional contract documents or information prescribed by the GPPB that are subsequently required for submission after the contract execution, such as the Notice to Proceed, Variation Orders, and Warranty Security, shall likewise form part of the Contract.

3. In consideration for the sum of *[total contract price in words and figures]* or such other sums as may be ascertained, *[Named of the bidder]* agrees to *[state the object of the contract]* in accordance with his/her/its Bid.
4. The *[Name of the procuring entity]* agrees to pay the above-mentioned sum in accordance with the terms of the Bidding.

IN WITNESS whereof the parties thereto have caused this Agreement to be executed the day and year first before written.

[Insert Name and Signature]

[Insert Name and Signature]

[Insert Signatory's Legal Capacity]

[Insert Signatory's Legal Capacity]

for:

for:

[Insert Procuring Entity]

[Insert Name of Supplier]

Acknowledgment

[Format shall be based on the latest Rules on Notarial Practice]

